

CAMPUS DE L' UNIVERSITE DE BOURGOGNE

CONSTRUCTION D' UNE SALLE MODULABLE

Maitre d' Ouvrage : **CONSEIL REGIONAL DE BOURGOGNE** 17 Boulevard de la Tremaille 21000 DIJON

Architecte : **Laurent PIERRE et Kaan COSKUN**
34 rue de l' Europe 21121 FONTAINE LES DIJON tel 80.56.47.04 - (0)48.04.79.39

Entreprise : **SAEE** Rue des Creuzots BP 609 21016 DIJON cedex tel 80.58.99.30

HA8

Bureau d'Etudes 13 Rue Ste Anne
21000 DIJON

tel 80 30 45 23

fax 80 30 86 63

dessine par :

BU

Dijon le :

5/10/95

responsable

AL

echelles :

1/50

dossier :

95050

Pht REZ DE CHAUSSEE
COUPES

coffrage ferrailage

DOE

plan :

07^A

Indice	date	modifications	demandeur
A	21/10/95	Pages 10 et 13	

CARACTERISTIQUES MECANQUES DES MATERIAUXBETON

fc 28 25 MPa

ACIERS

Barres H.A. : fe E50 : fe = 500 Mpa

Ronds lisses : fe E24 : fe = 235 Mpa

Treillis soudés : T.S.L. } fe = 500 Mpa
T.S.H.A. }

Nota: * Enrobage 3 cm

* les ouvertures sont
destinées avec 1 cm de réserve
sur chaque tableau et en linteau

- Coupe A - A -

4x10.00

$\begin{array}{c} 10 \\ \square 60 \end{array} \quad \begin{array}{c} 10 \\ \leftarrow \end{array}$

② HHA B Filauk
+ 38 W HА 6 e: 25
+ 19 sp HА 6 e: 50

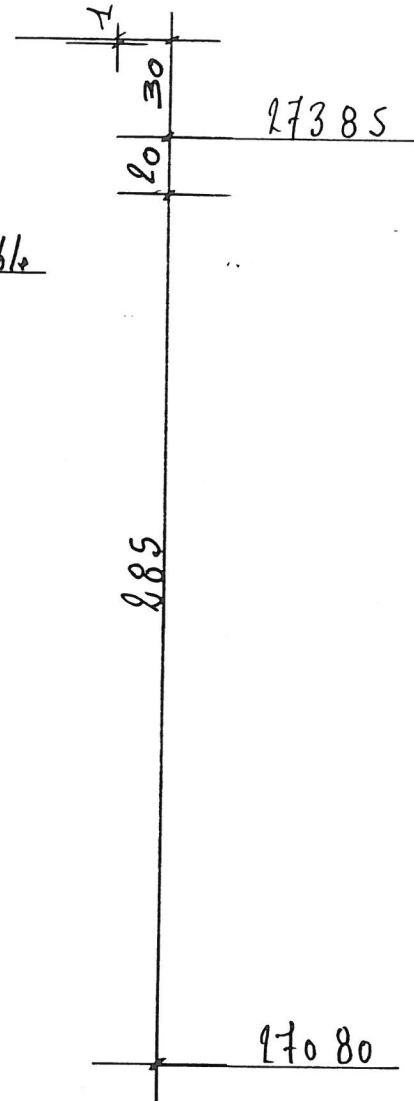
① 2HА10 + 2HА12
2x2x10.00

HА 8 dépliant
e: 20

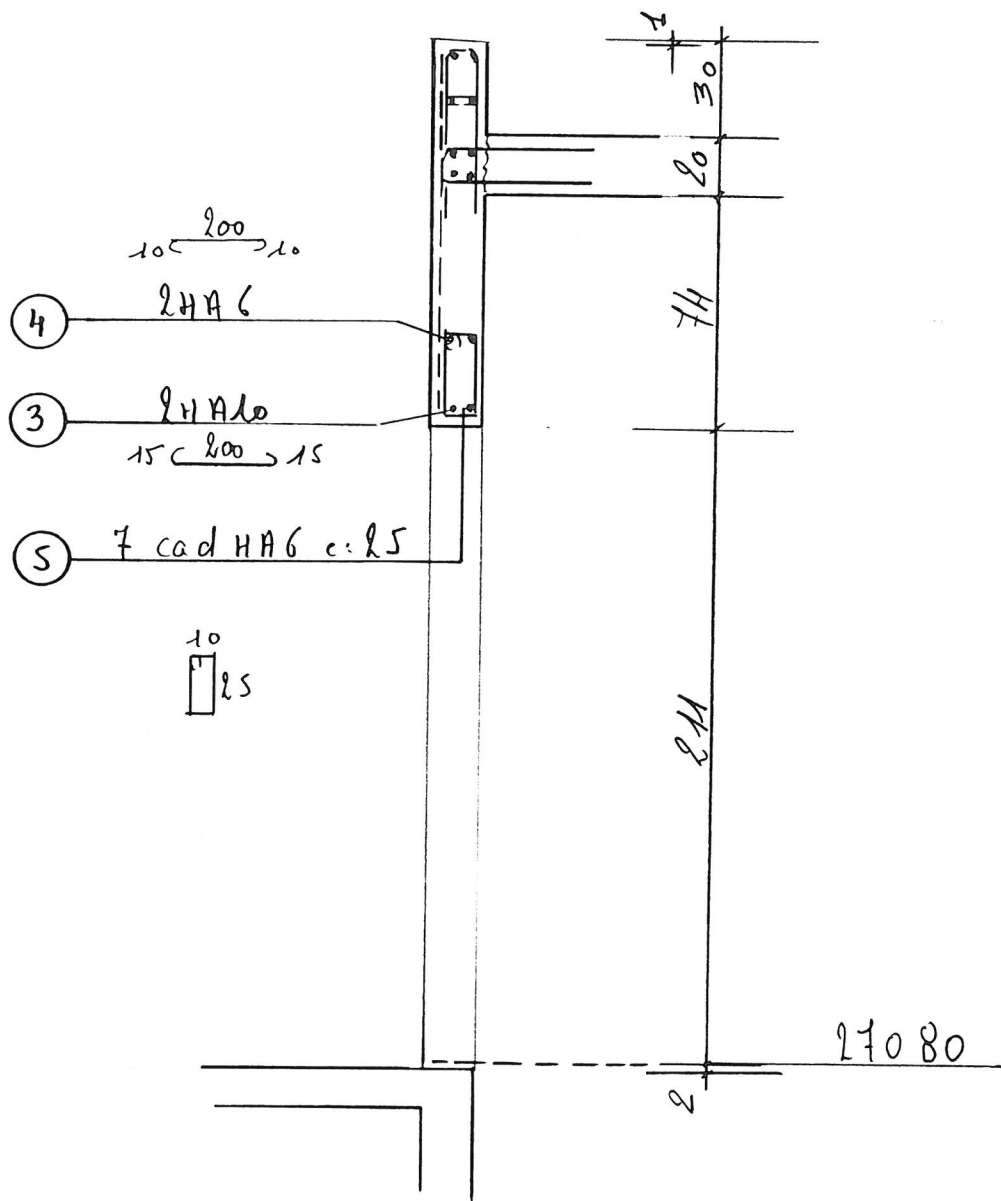
P 80C

16

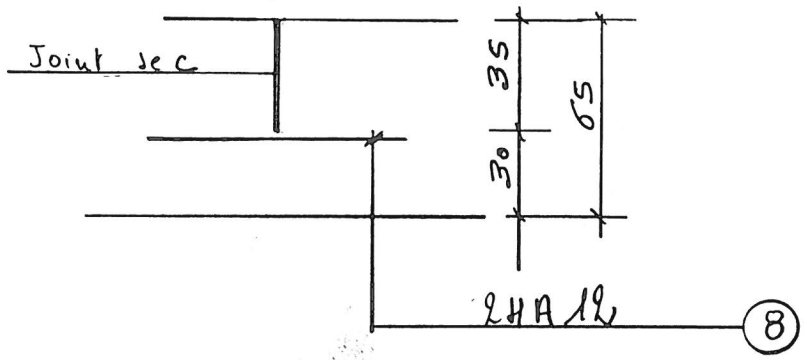
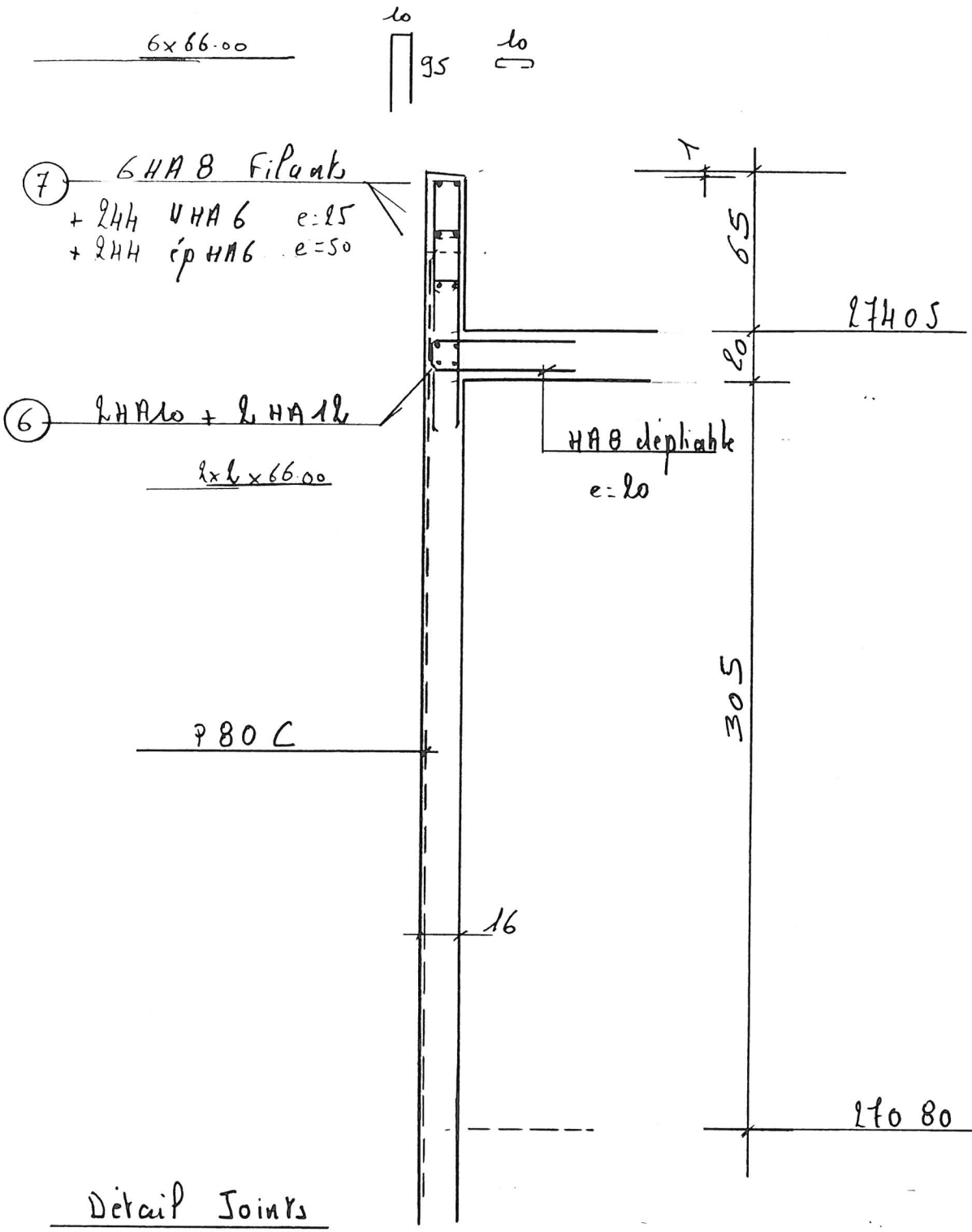
Coursive.



- L1 nb 2 -



- Coupe B. B -

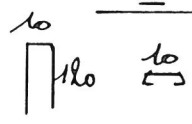


Voir répartition des Joints
sur vue en plan

$$\frac{120}{nb\ 16} \quad \frac{60}{nb\ 16}$$

- Coupe C.C -

6x36.00

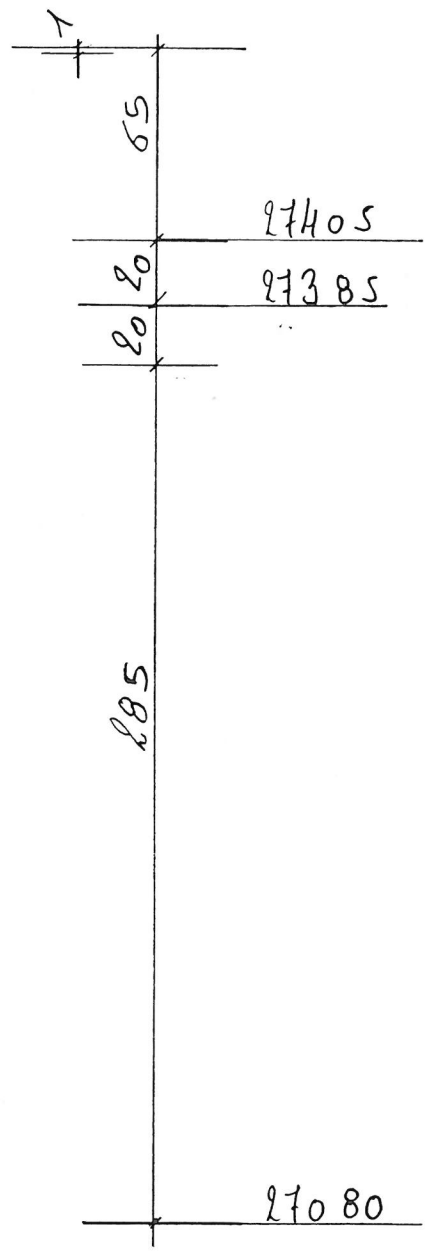
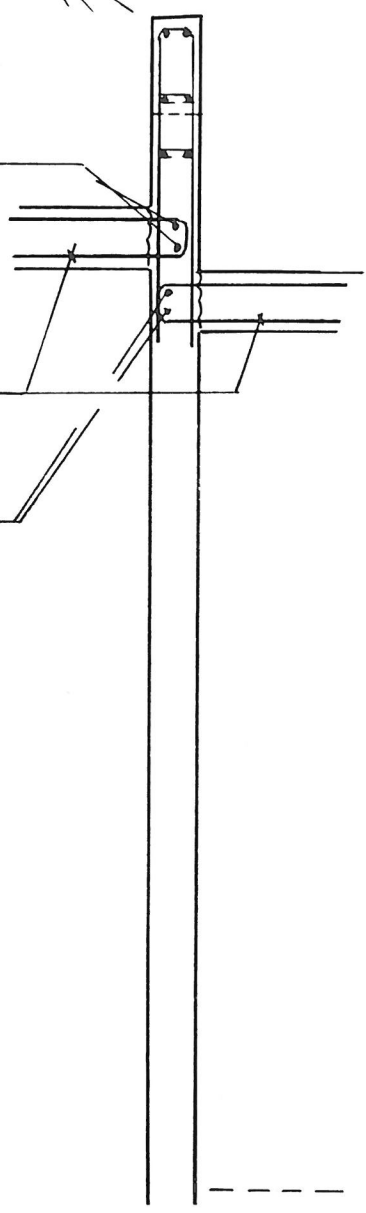


① 6HAB
+ 134 HAB e: 25
+ 134 ep HAB e: 50

⑩ 2HA 12
2x36.00

HAB dépliabl
e: 20

⑨ 2HA 10
2x36.00



55

27405

20

27385

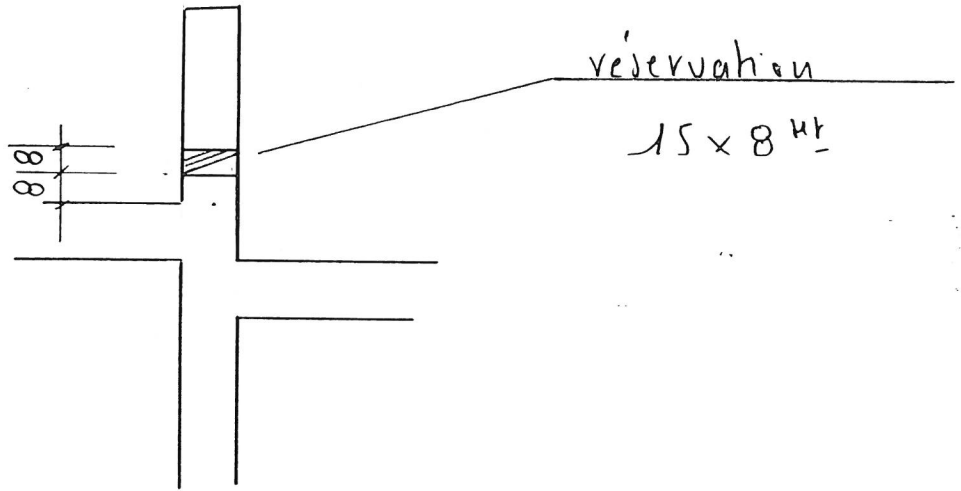
20

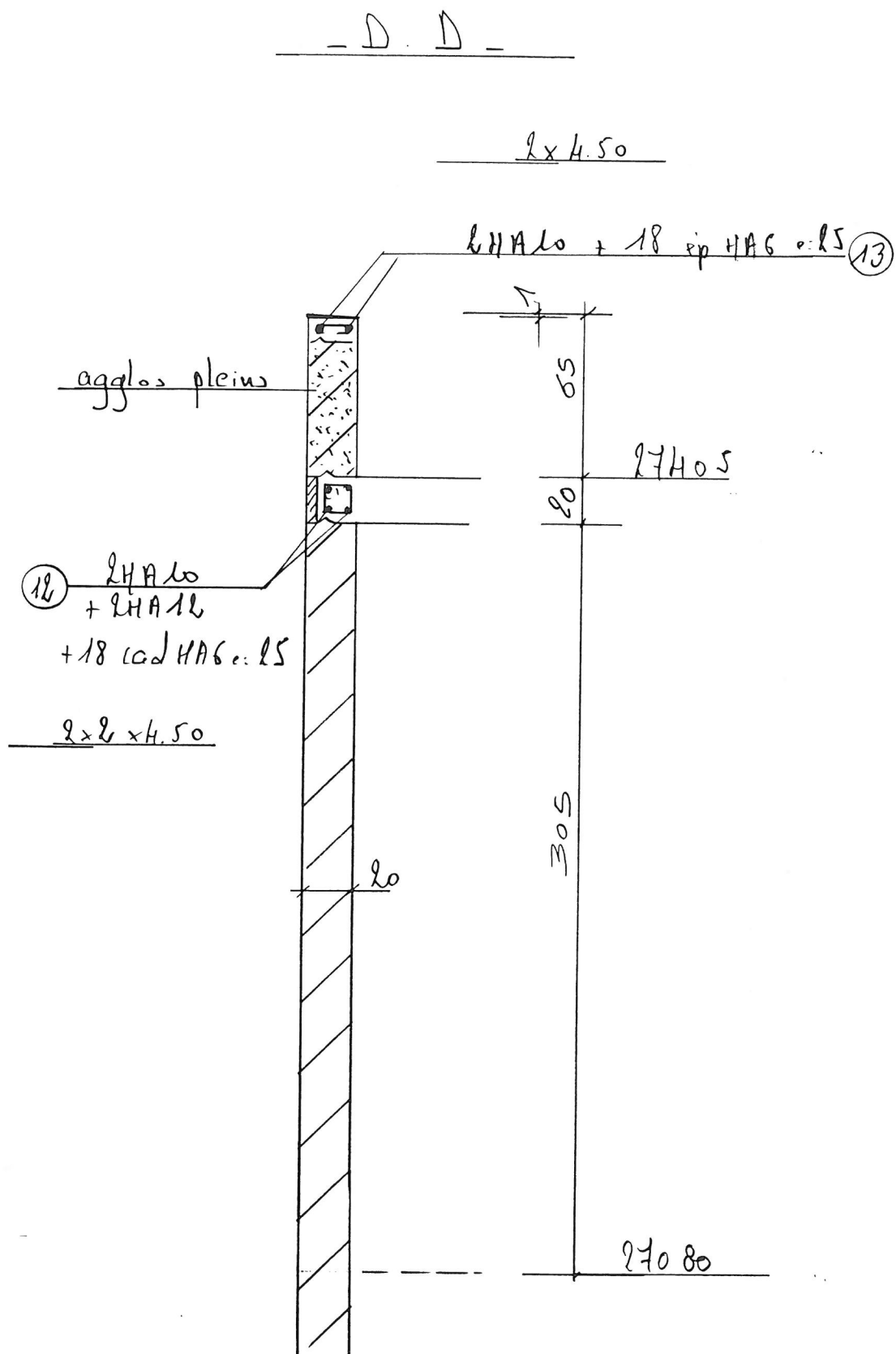
285

27080

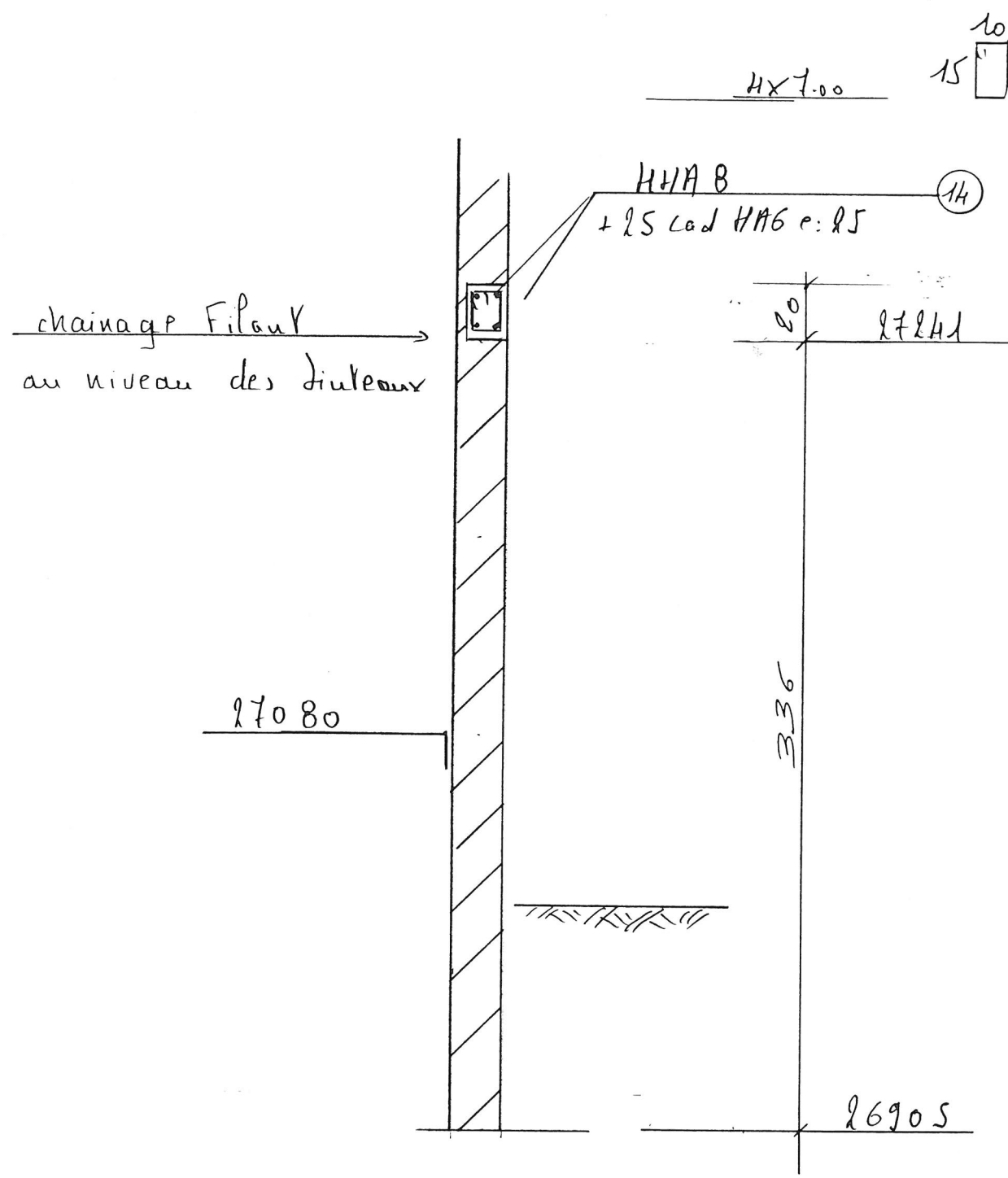
Détail EP dans arriere

- nb 6 -

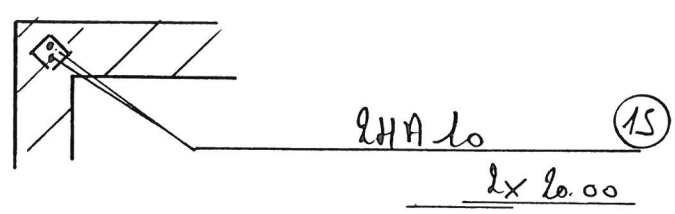




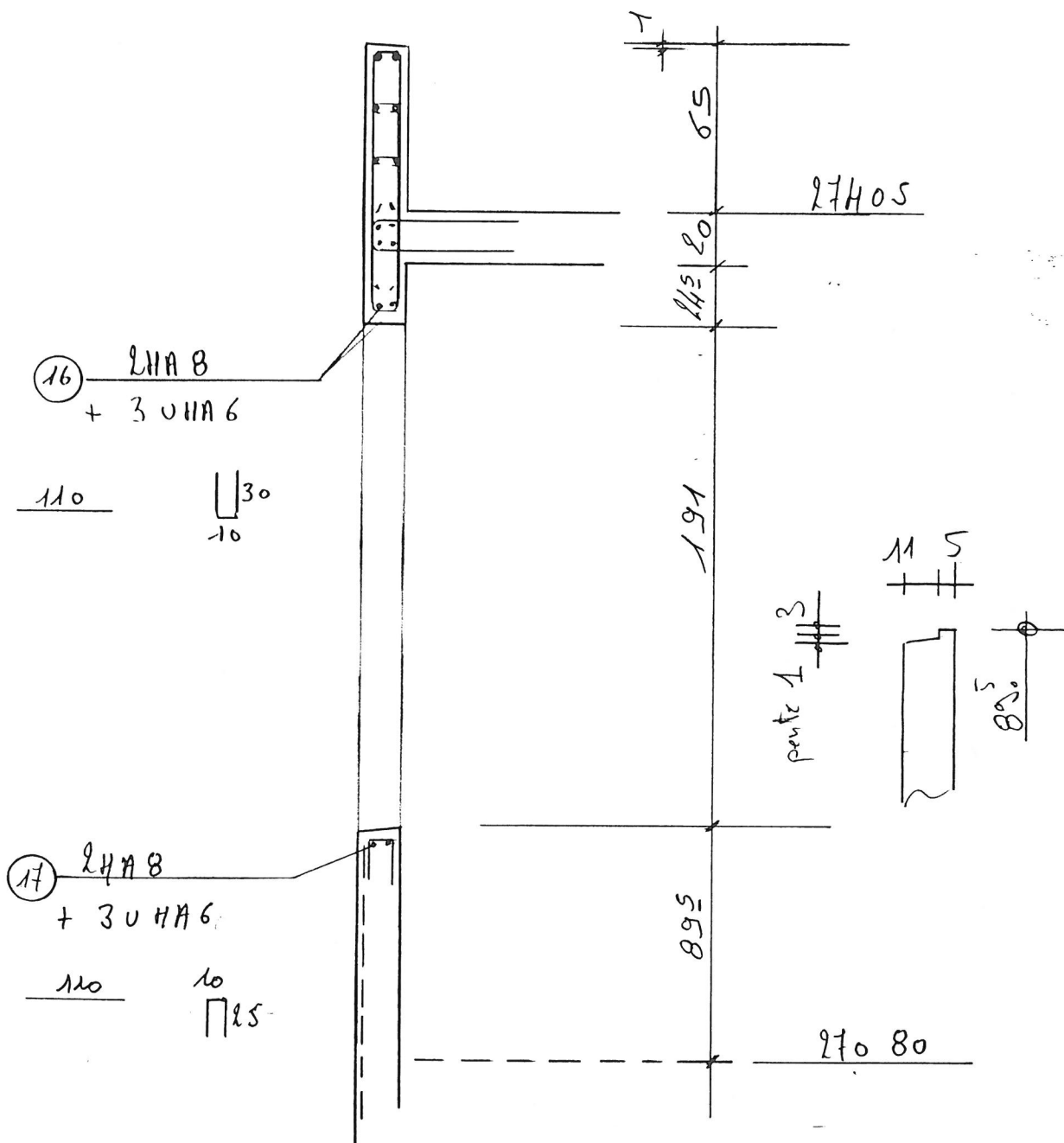
Coupe E.E



- Raidisseurs -

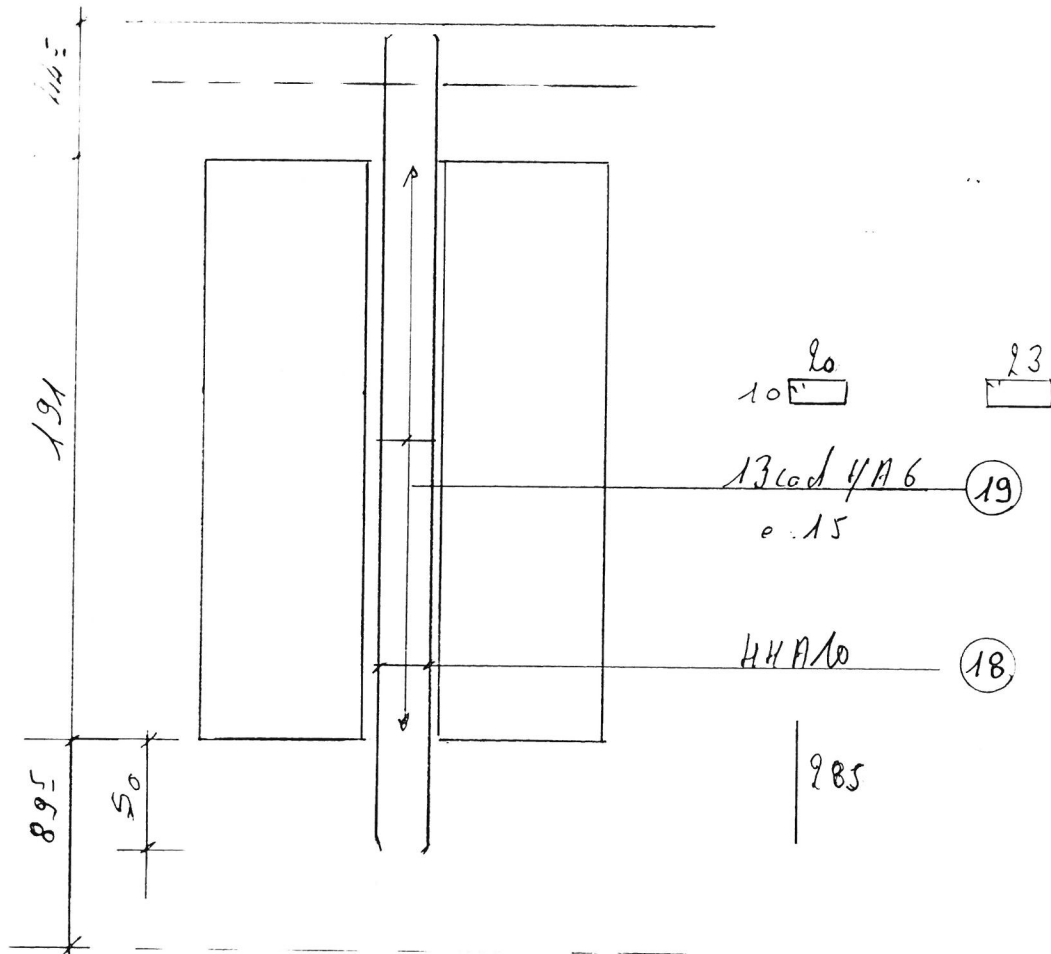


12 nb 7



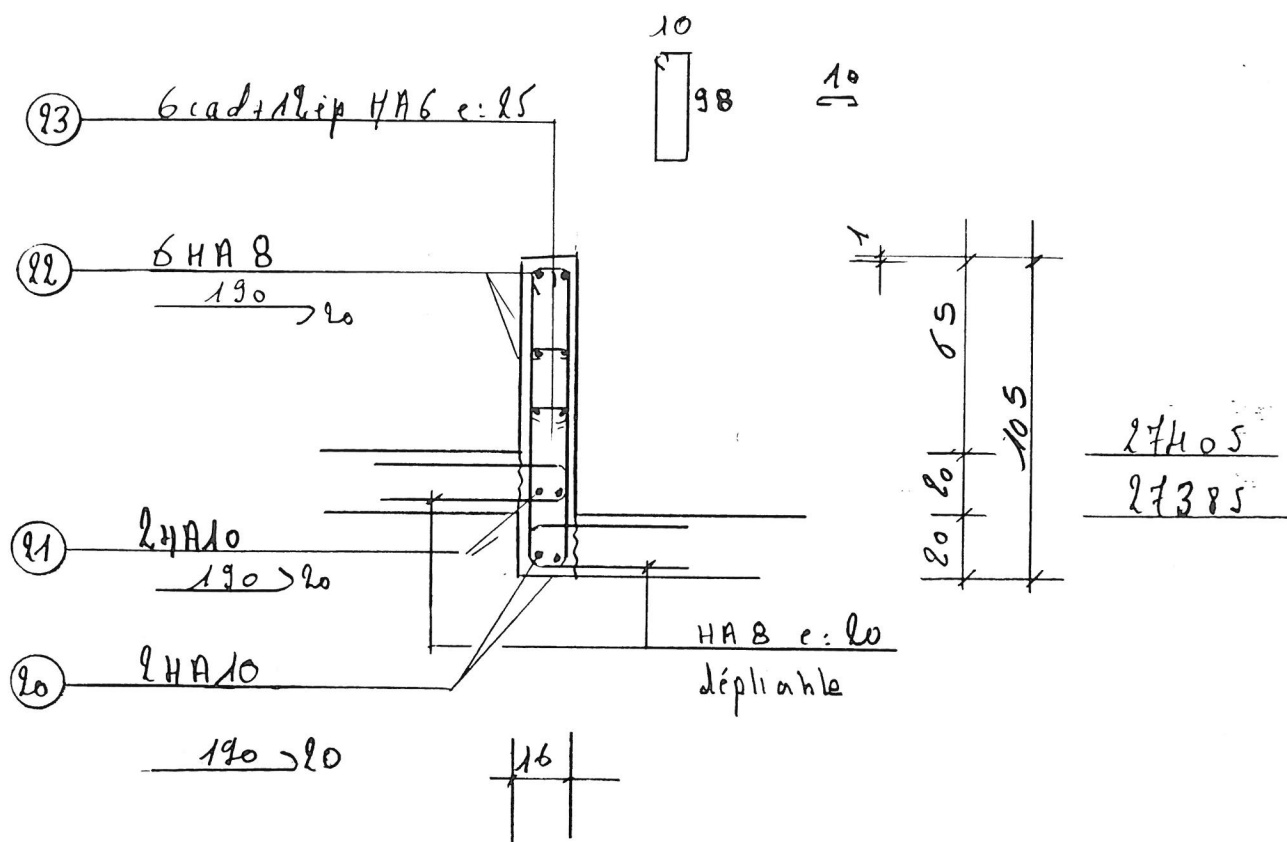
- M1 nb 1 -

- M1' nb 2 -

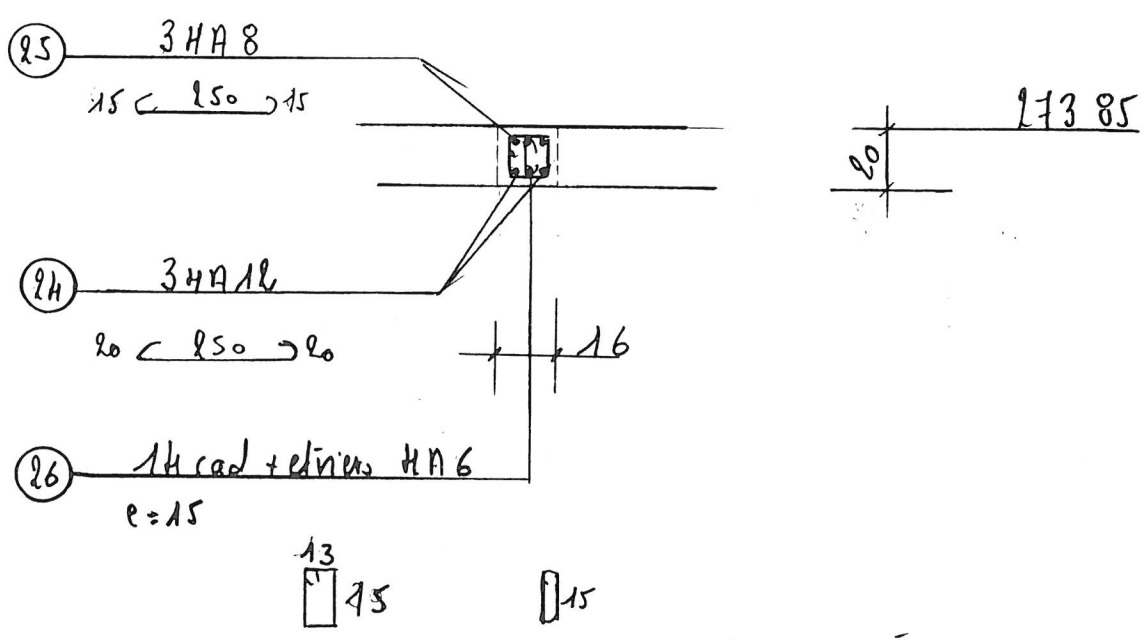


25	M1
28	M1'

- L3 nb 1 -



- L4 nb 1 -



- LS nb 1 -

(30) 3ood rep 1/116 e: 15

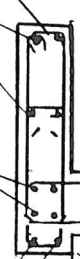
~~pas de détail appui Vernière ?~~

(29) 111118
10 e: 130 10

(28) 1111110
11 e: 130 11
alignement avec
L2.

(27) 111118
+ 3 011116 e: 15

10 e: 130 10 ~~135~~



Faux Plafond
HA8 e: 10
dipliable

35

21385

10

10

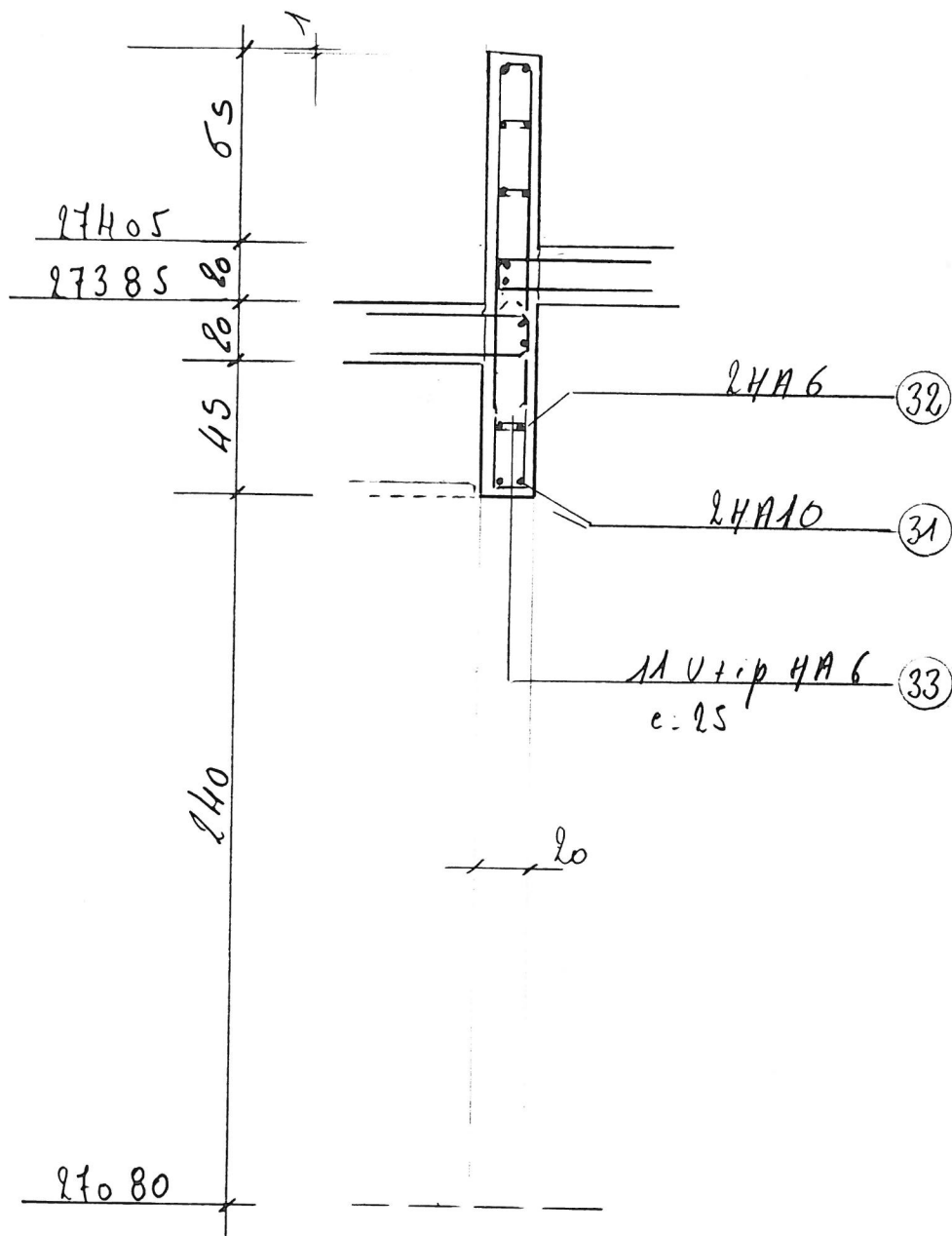
275 ~~281~~

~~285 plan Pictoy ?~~

27080

2

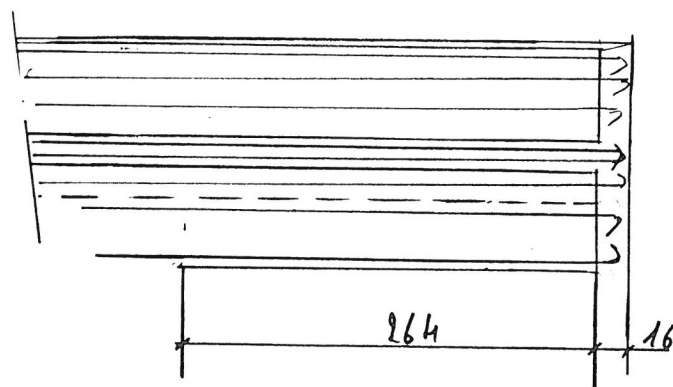
- L 6 - nb 1 -



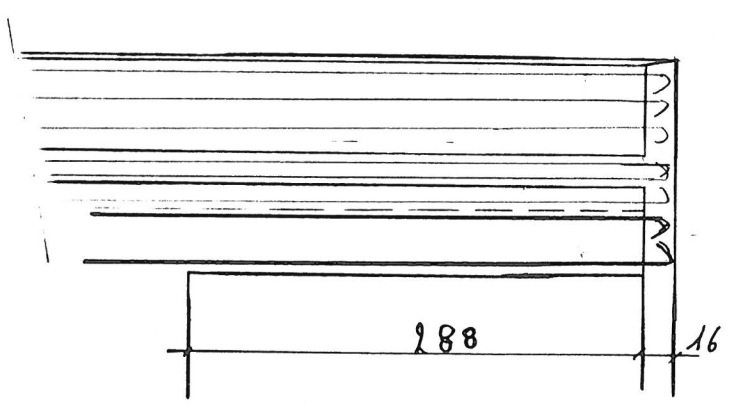
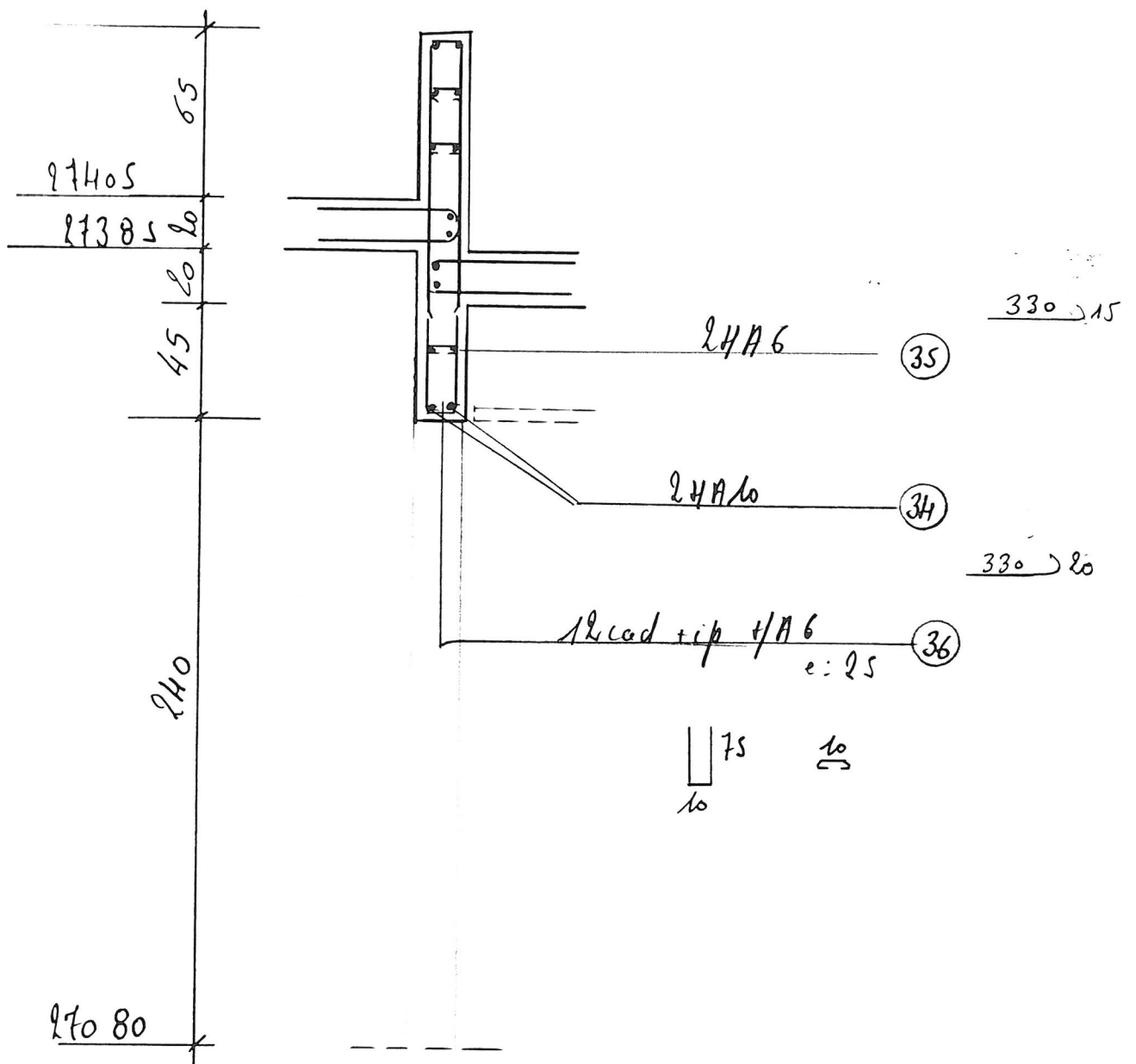
300 > 15

300 > 20

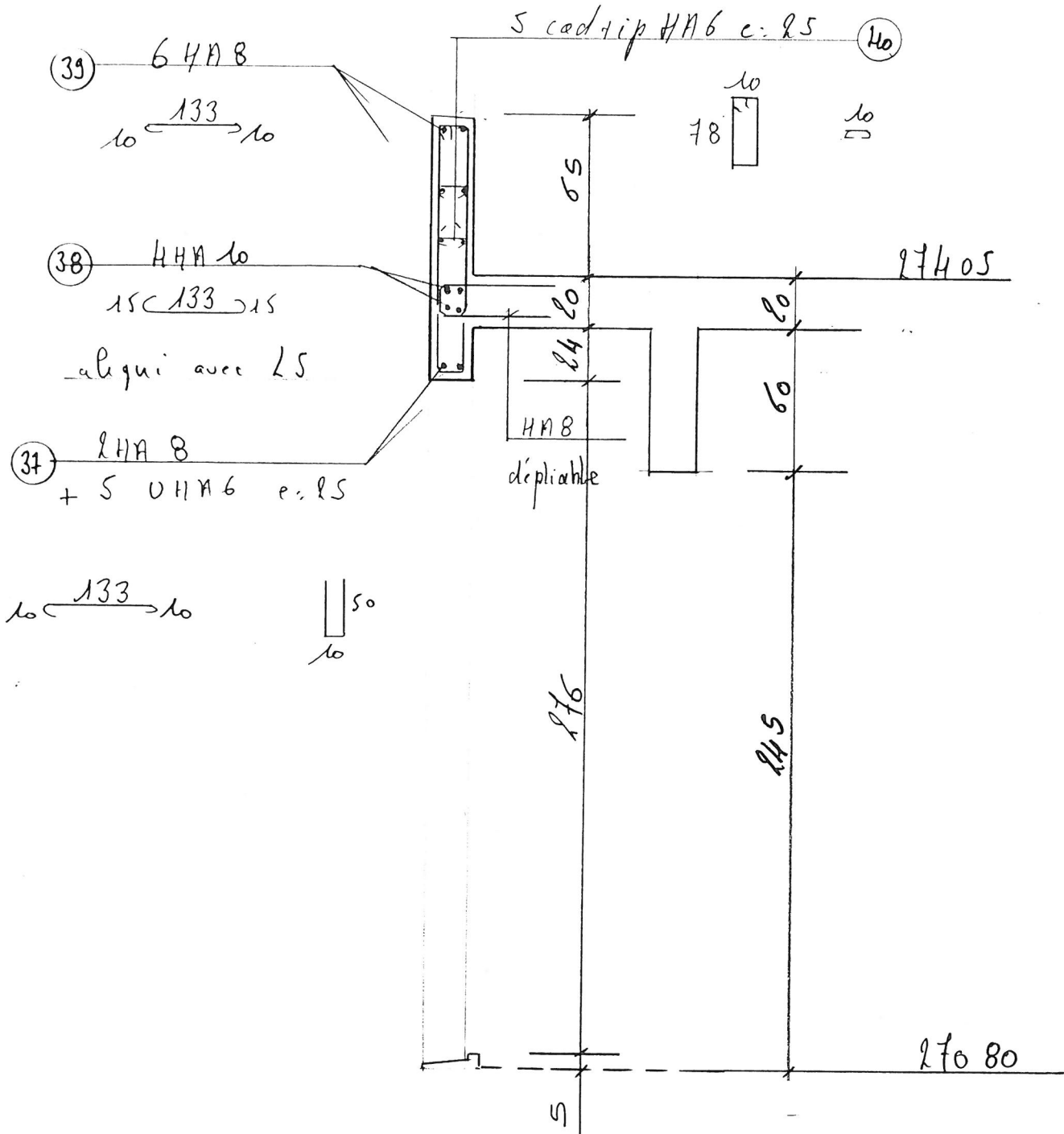
75 10
10



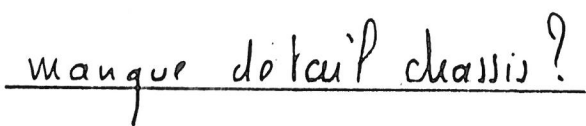
- L 7 nb 1 -



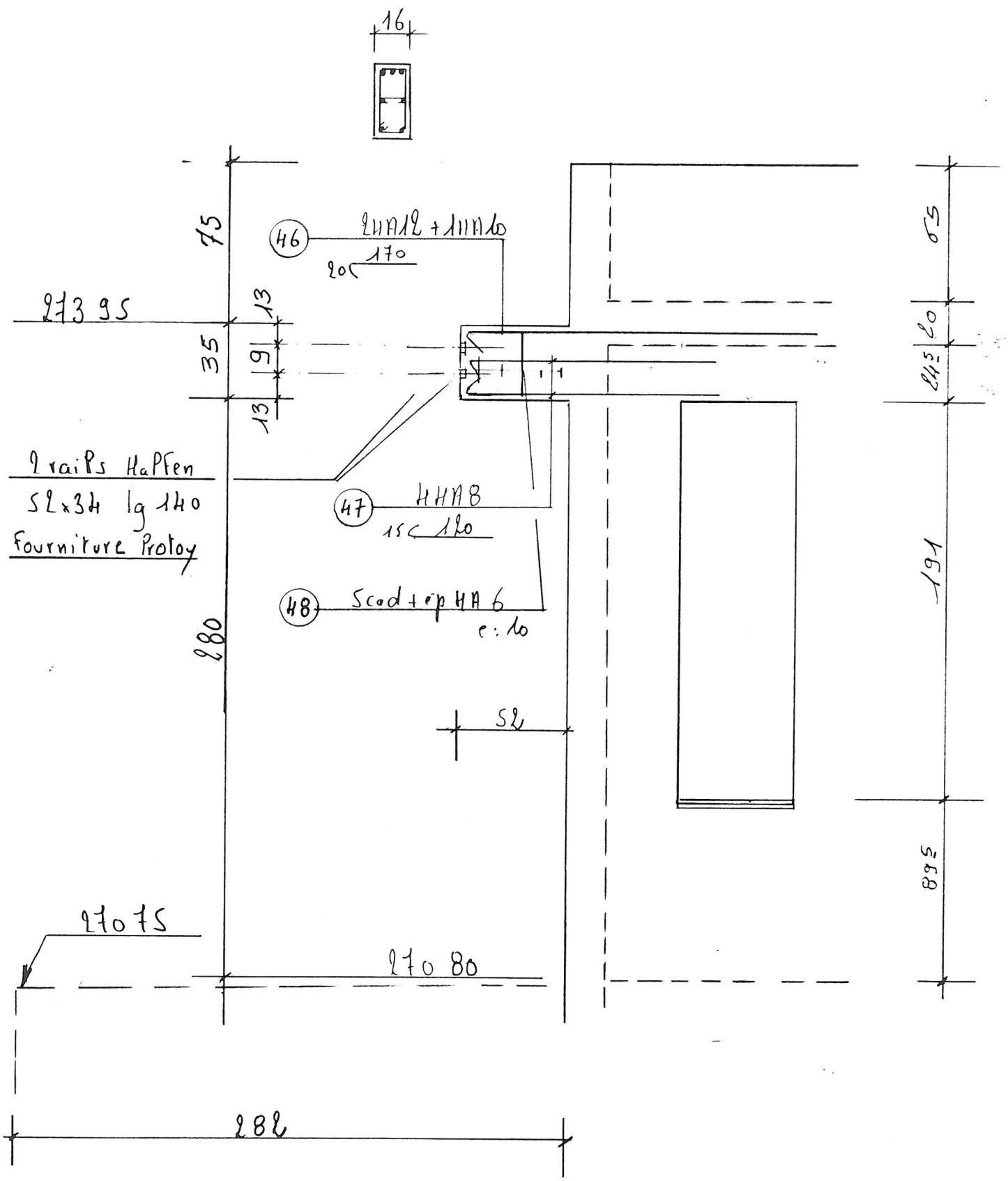
L8 nb 1

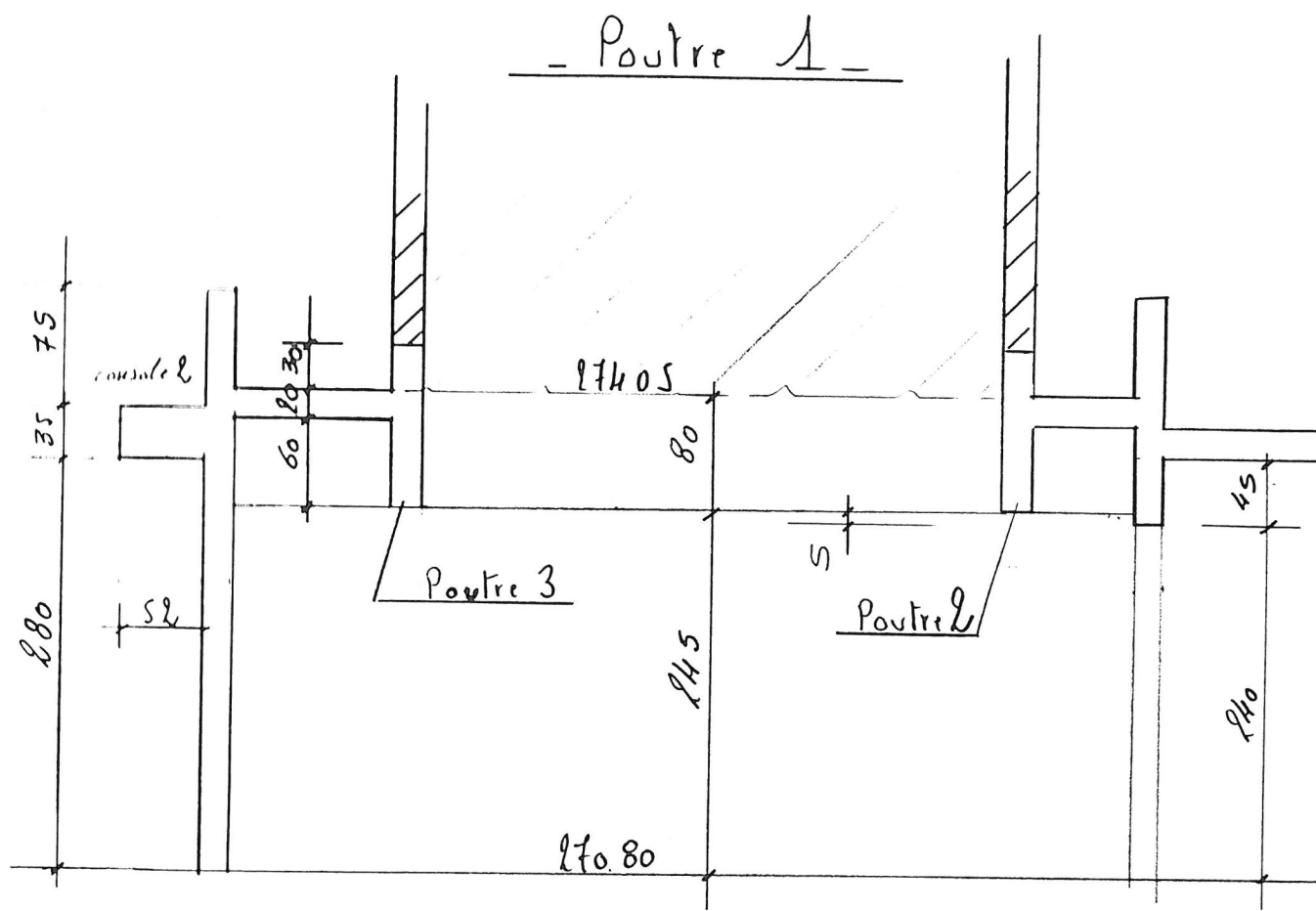


à confirmer



Console 1





H¹. 245 à confirmer.

CARACTÉRISTIQUES MÉCANIQUES DES MATÉRIAUX

BÉTON

f_{c28} : 25 MPa

ACIERS

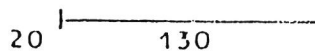
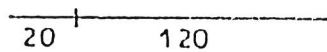
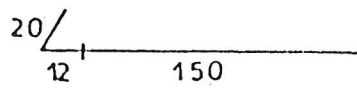
Barres H.A. : f_e E50 : $f_e = 500$ MPa

Ronds lisses : f_e E24 : $f_e = 235$ MPa

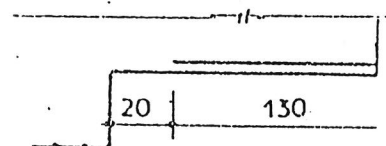
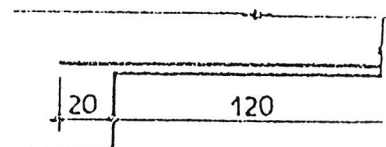
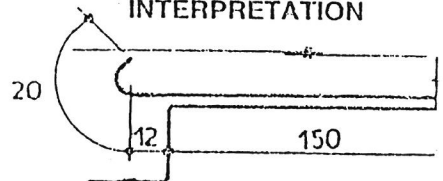
Troillis soudés : T.S.L. } $f_e = 500$ MPa
T.S.H.A.

REPRÉSENTATION DES ACIERS

POUTRES dessinées ordinateur
SCHEMA



INTERPRÉTATION





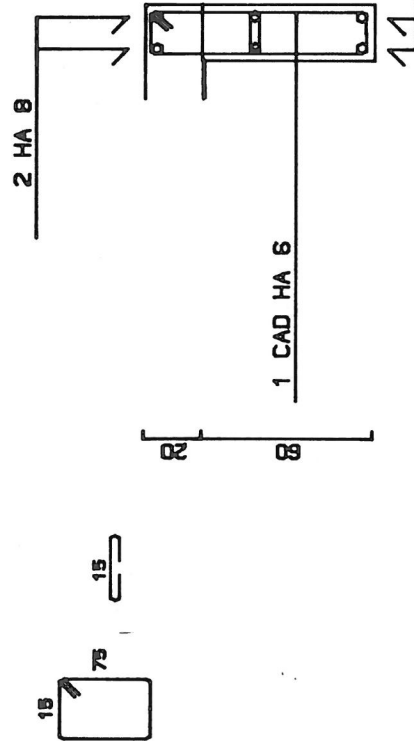
NR X NZ (77714 L)



9

DR. 11 CAD HA 6 X 1.95

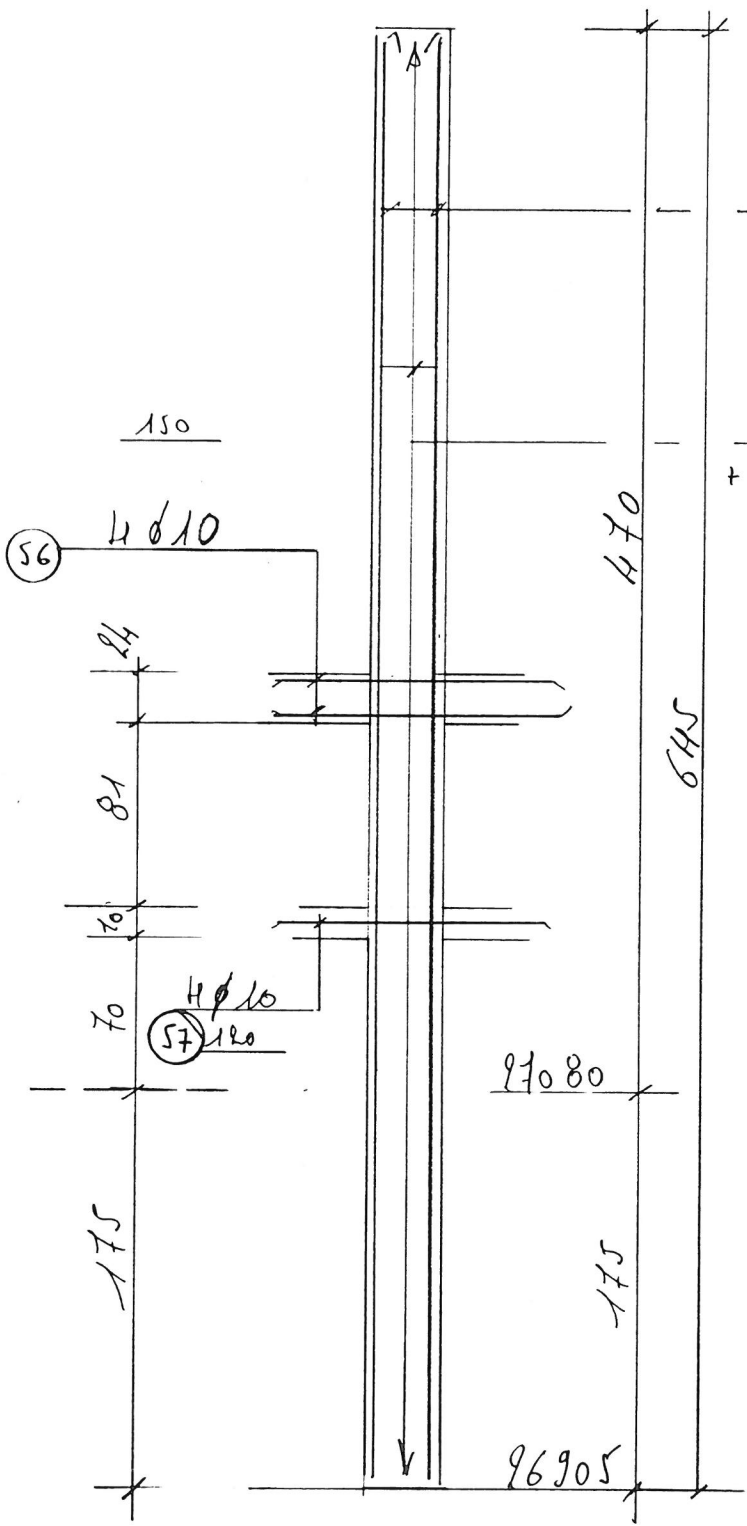
A number line starting at 12 and ending at 16. The line has tick marks every 0.205 units. Labels are placed at specific intervals: 12, 2x 35, 22, 3x 35, 2x 35, and 16.



POIDS PIECE PREFABRIQUEE .973 TONNES
LONGUEUR PREFA 3.22
BARRES HAUTES DE MONTAGE : LIBRES
DEUX CROCHETS DE LEVAGE D 10

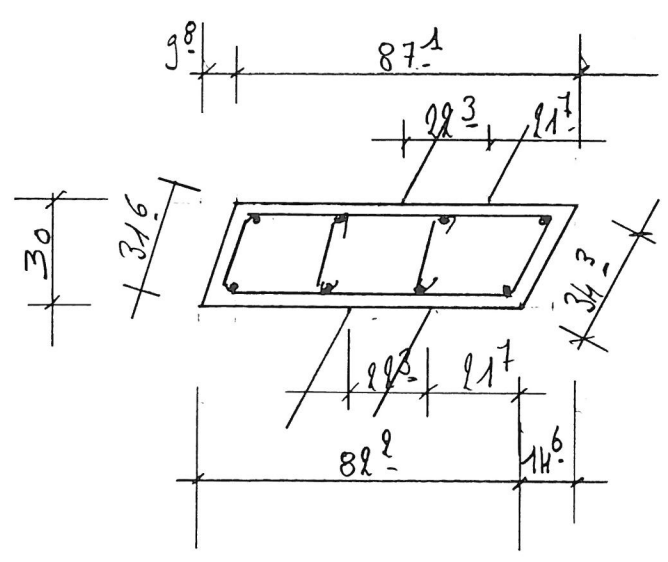
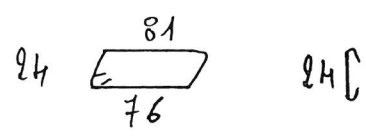
64

- P1 nb 1 -

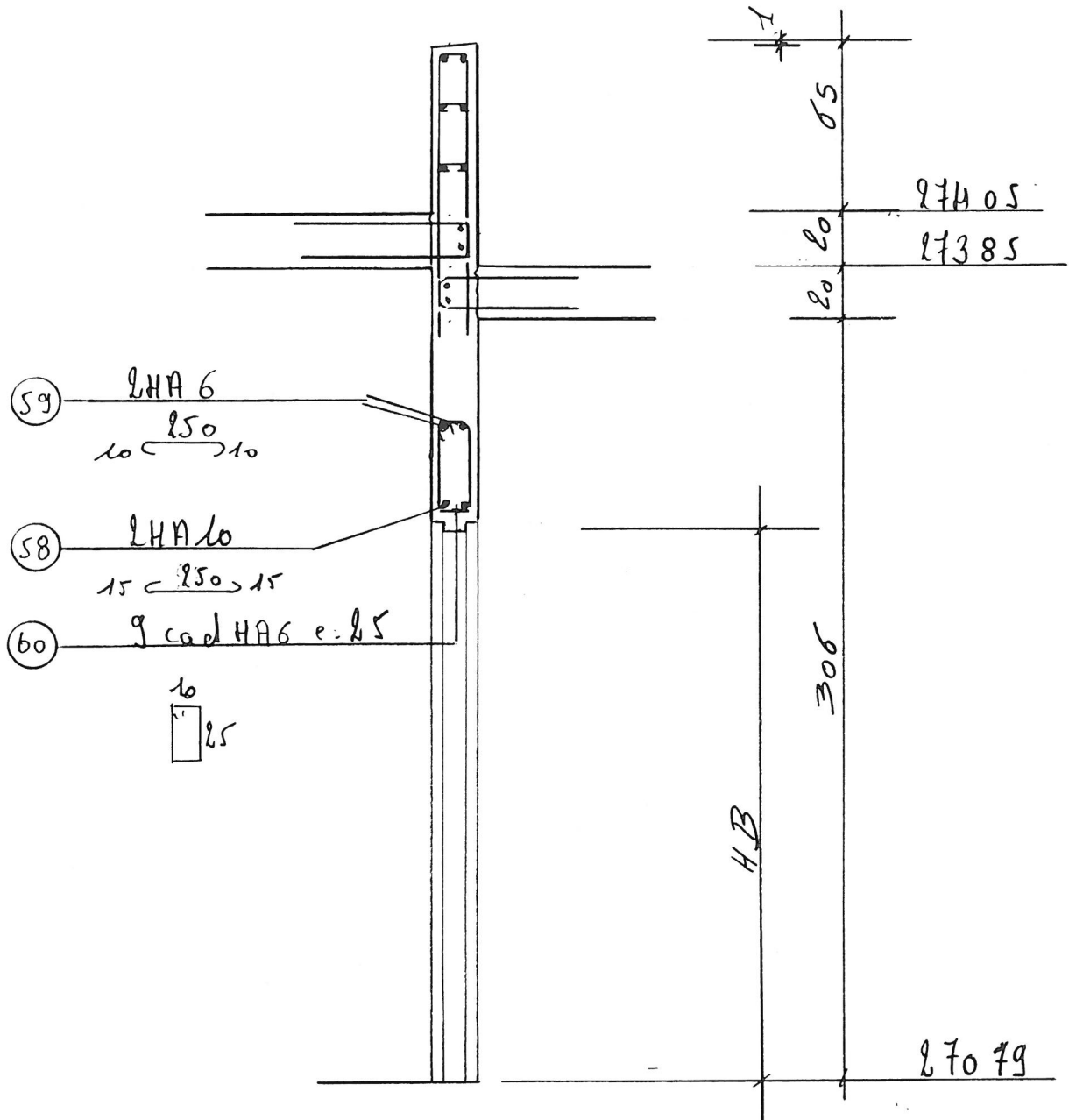


8HA12 (54)

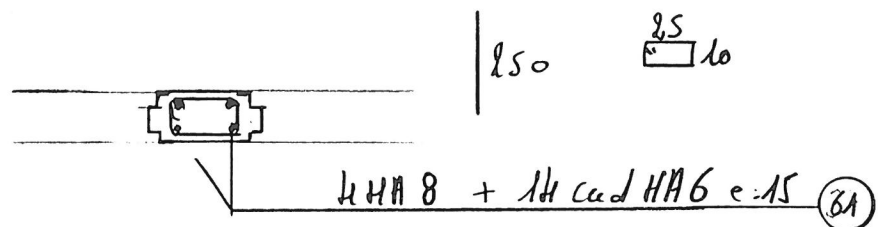
36 cad HA6 c:18 (55)
+ 72 *p HA6



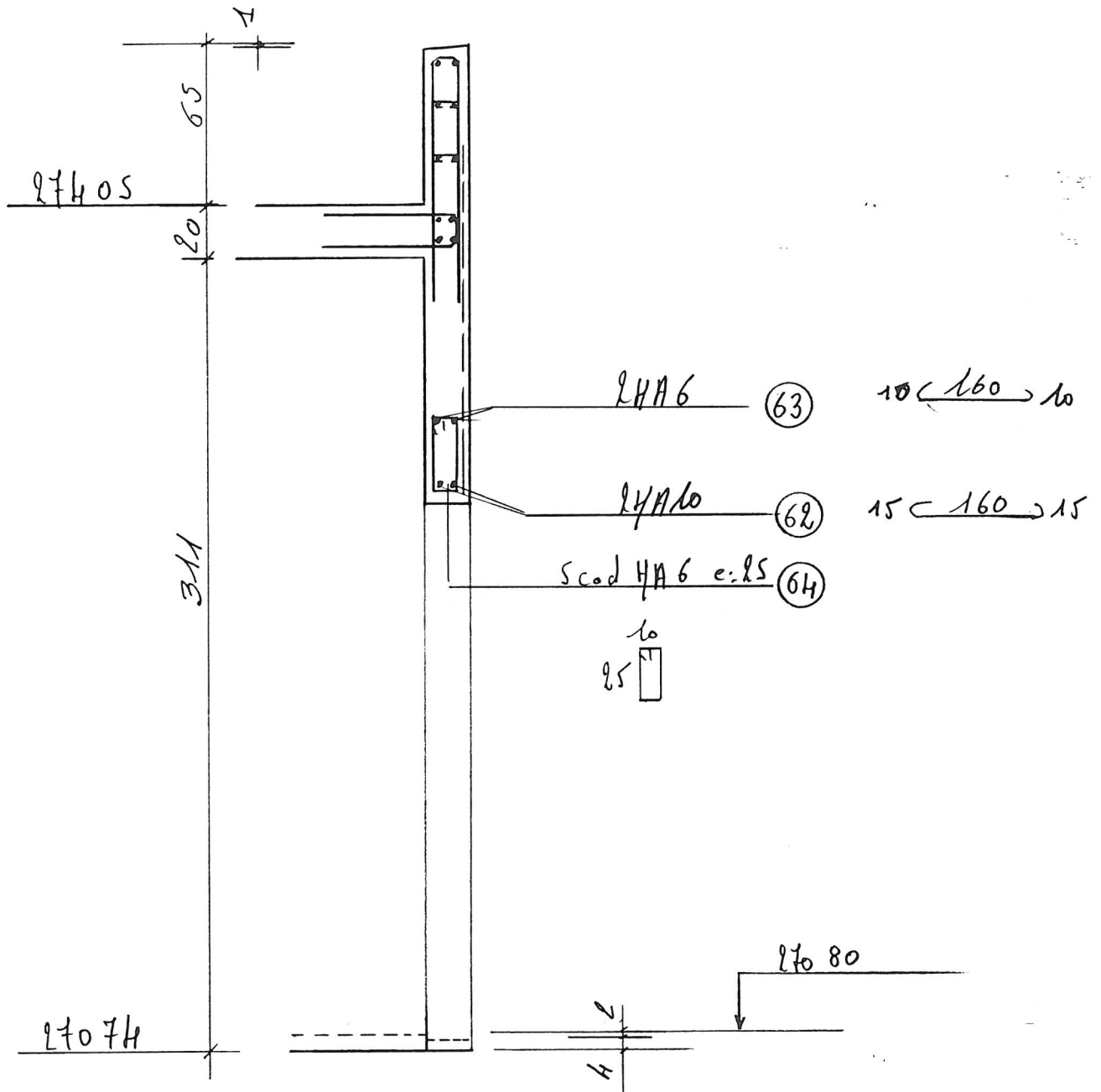
- L11 ub 1 -



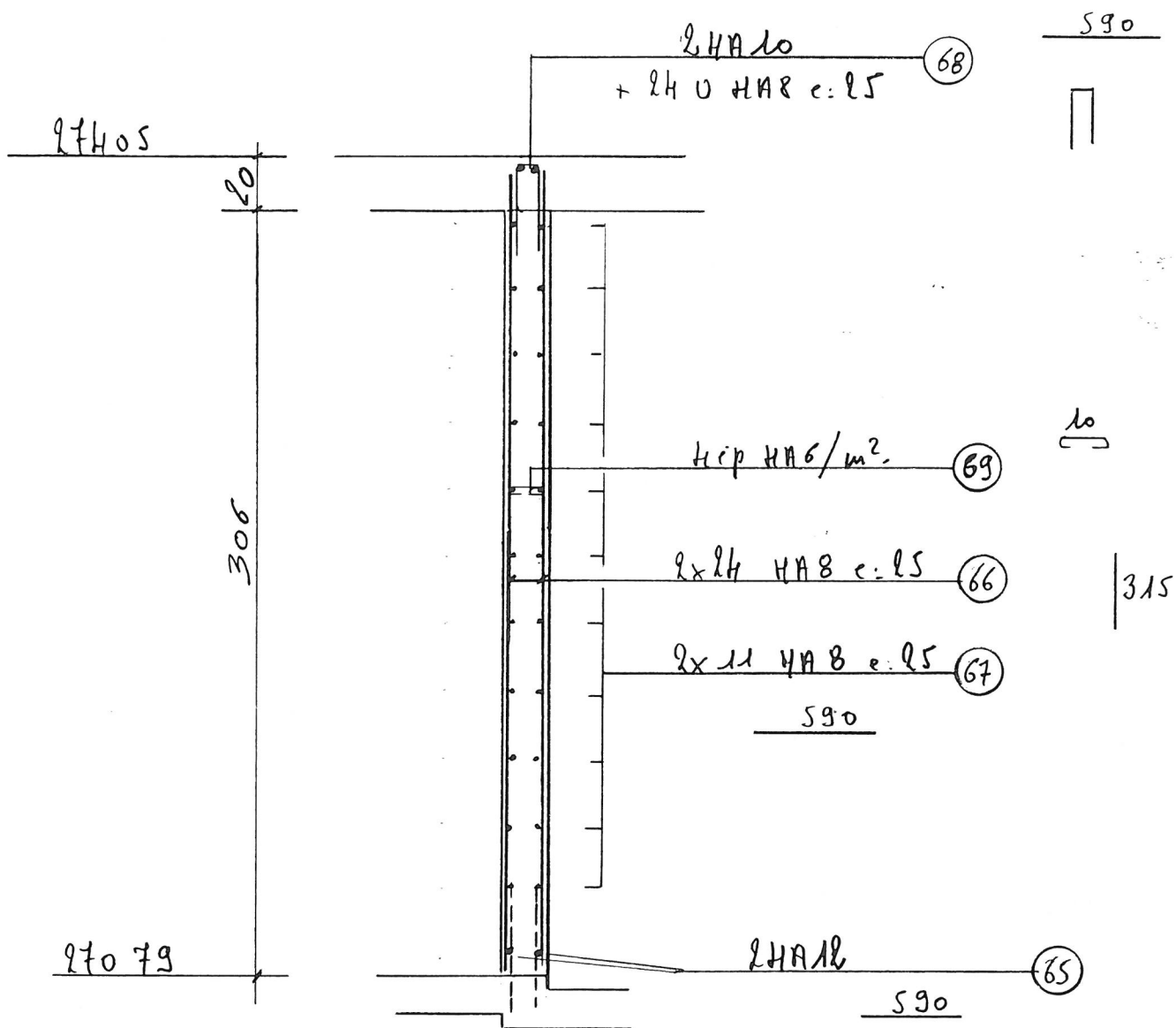
- Menekan M2 ub 1 -



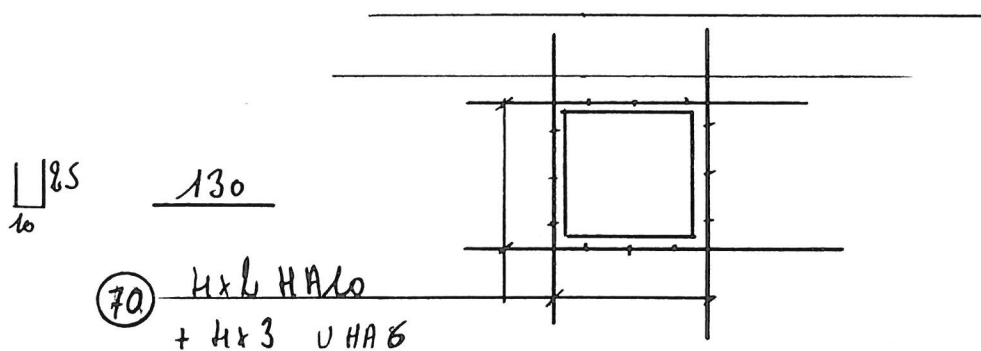
- L12 nb 1 -



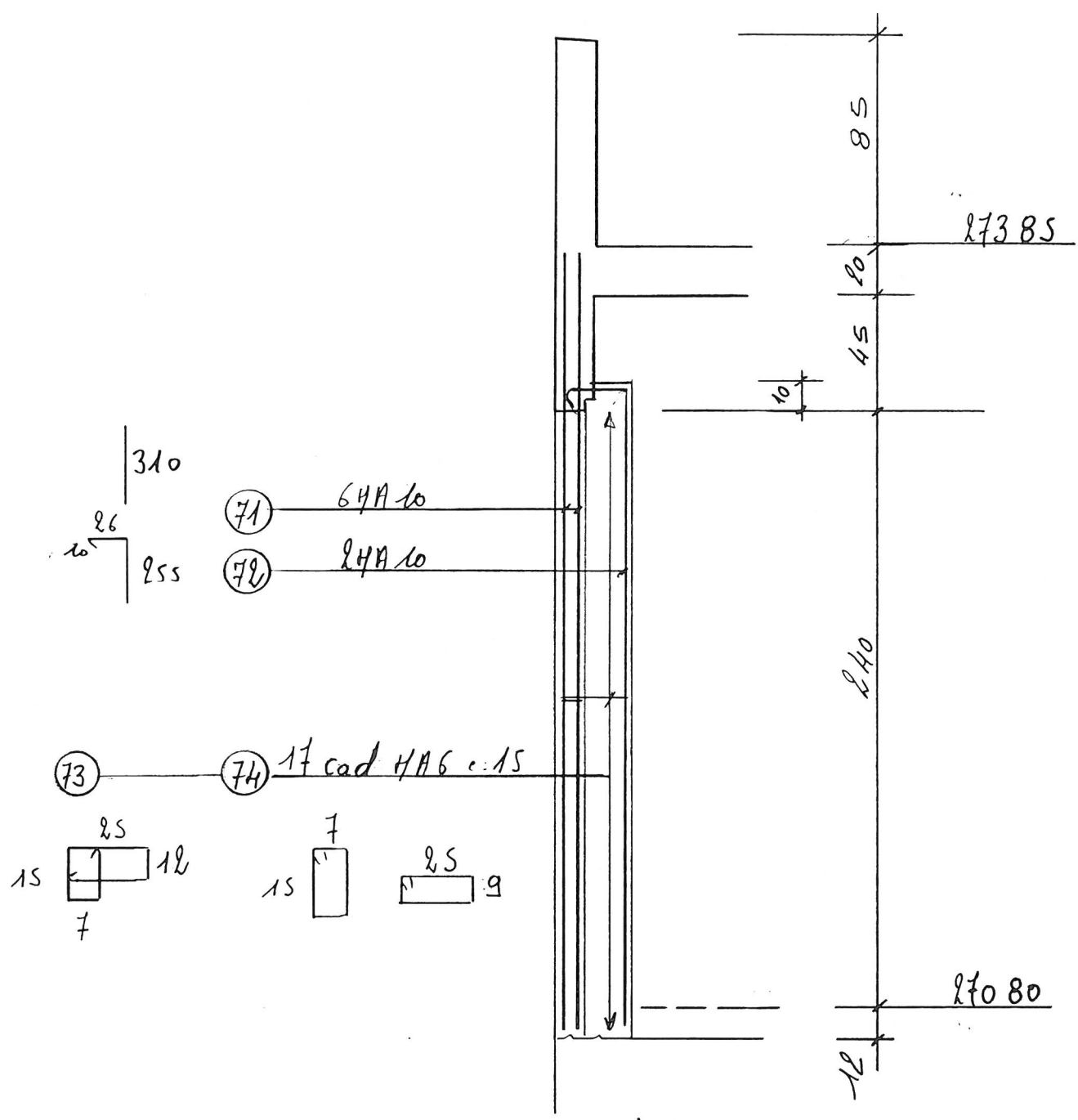
Poutre voile nb 1



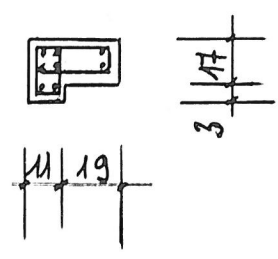
RenForts réservations dans PV nb 2



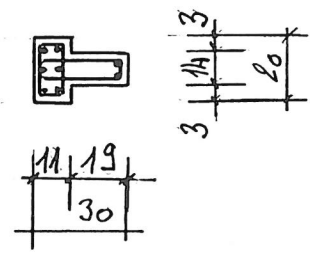
Membreaux M3 M4 M5



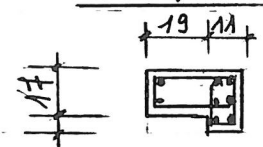
M5



M3 nb 3



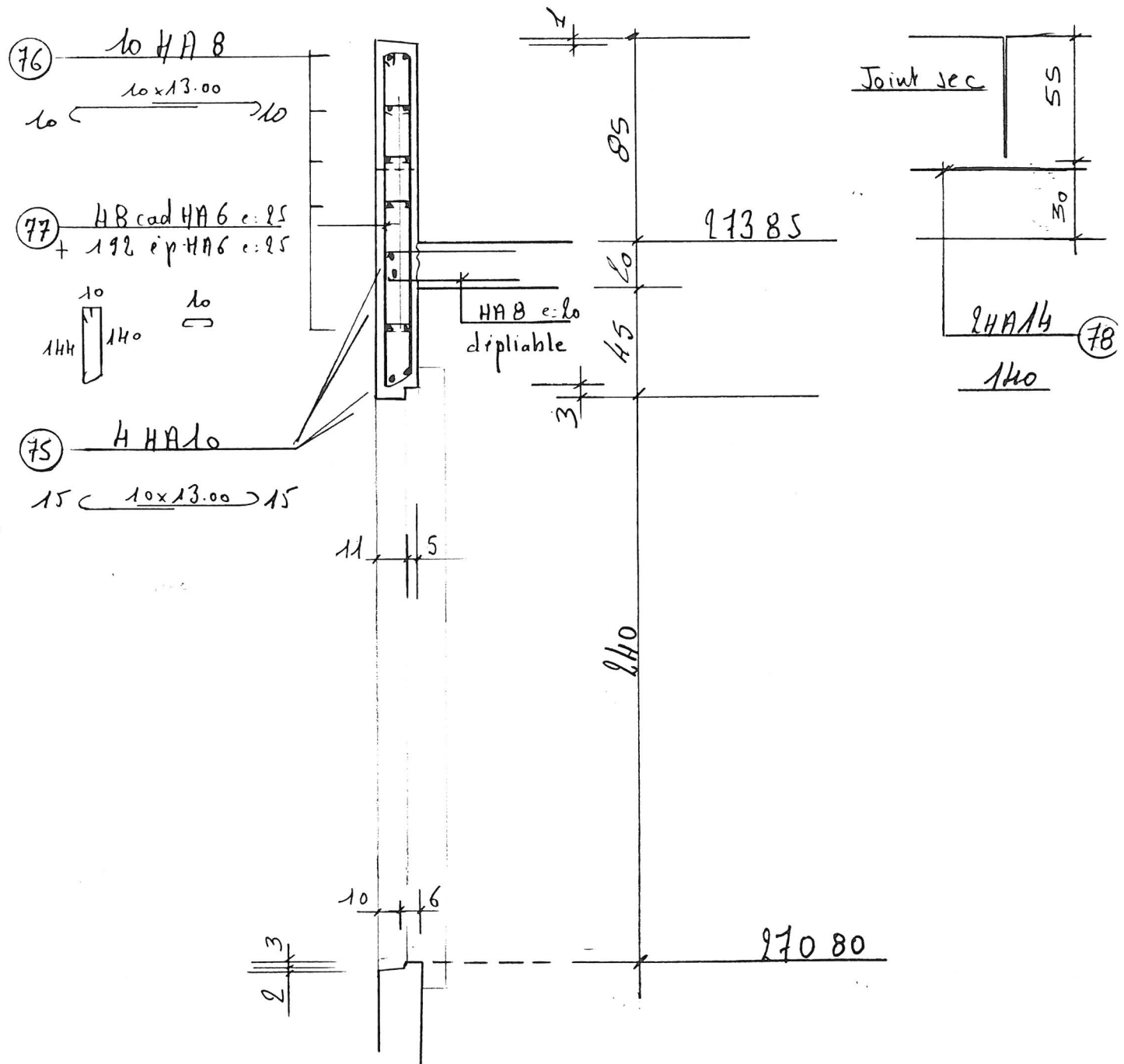
M4 nb 1



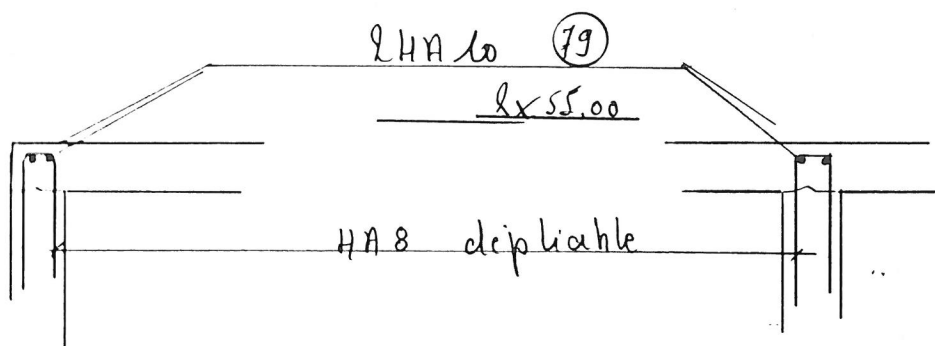
ferrailage idem M1
assemblage symétrique

- L 13 - (armatures Filantes)

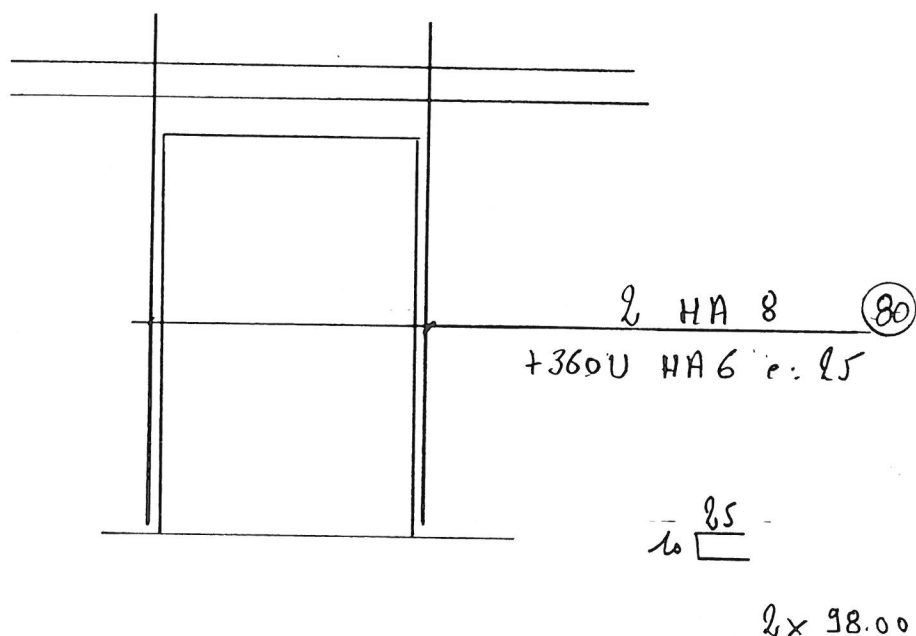
- Joints nb 1 -



Renforts d'angles

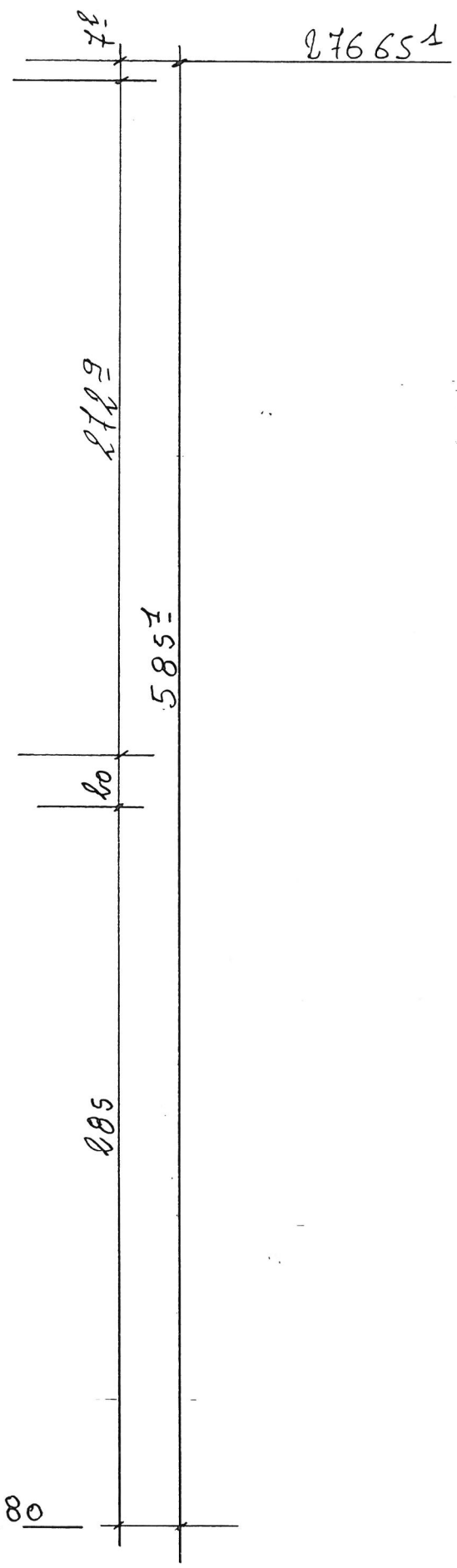
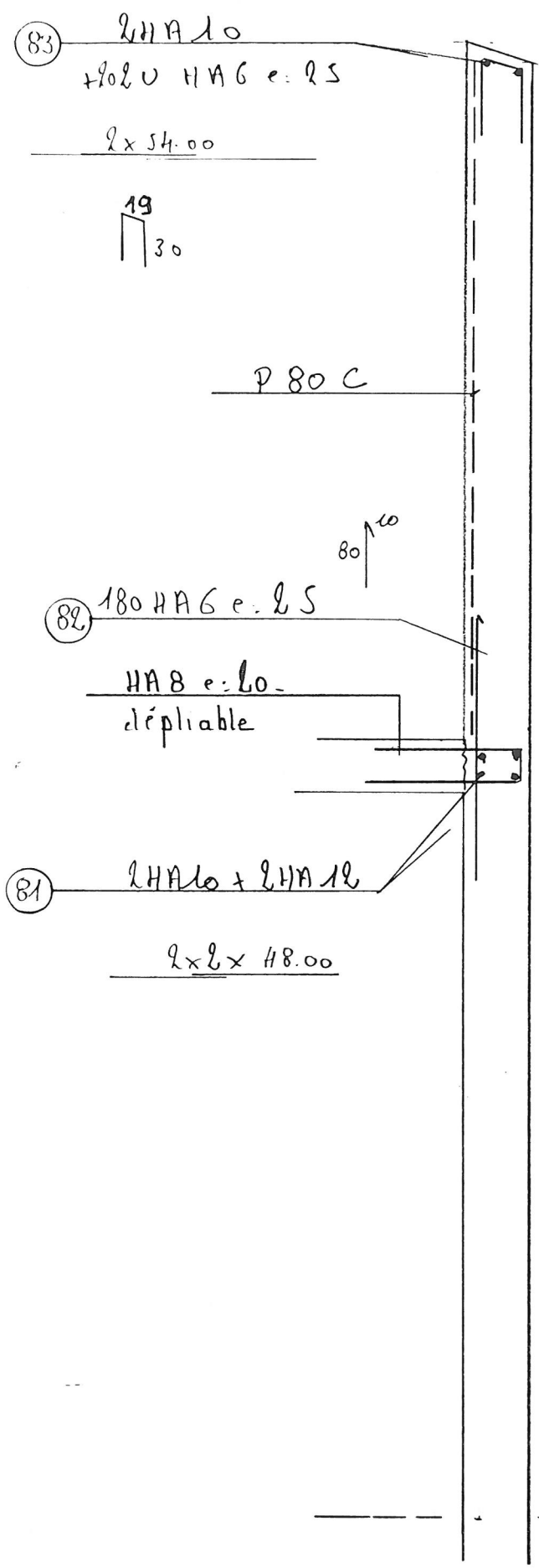


Renforts verticaux des ouvertures et abouts de voile.



Ferrailage Voile ep 25

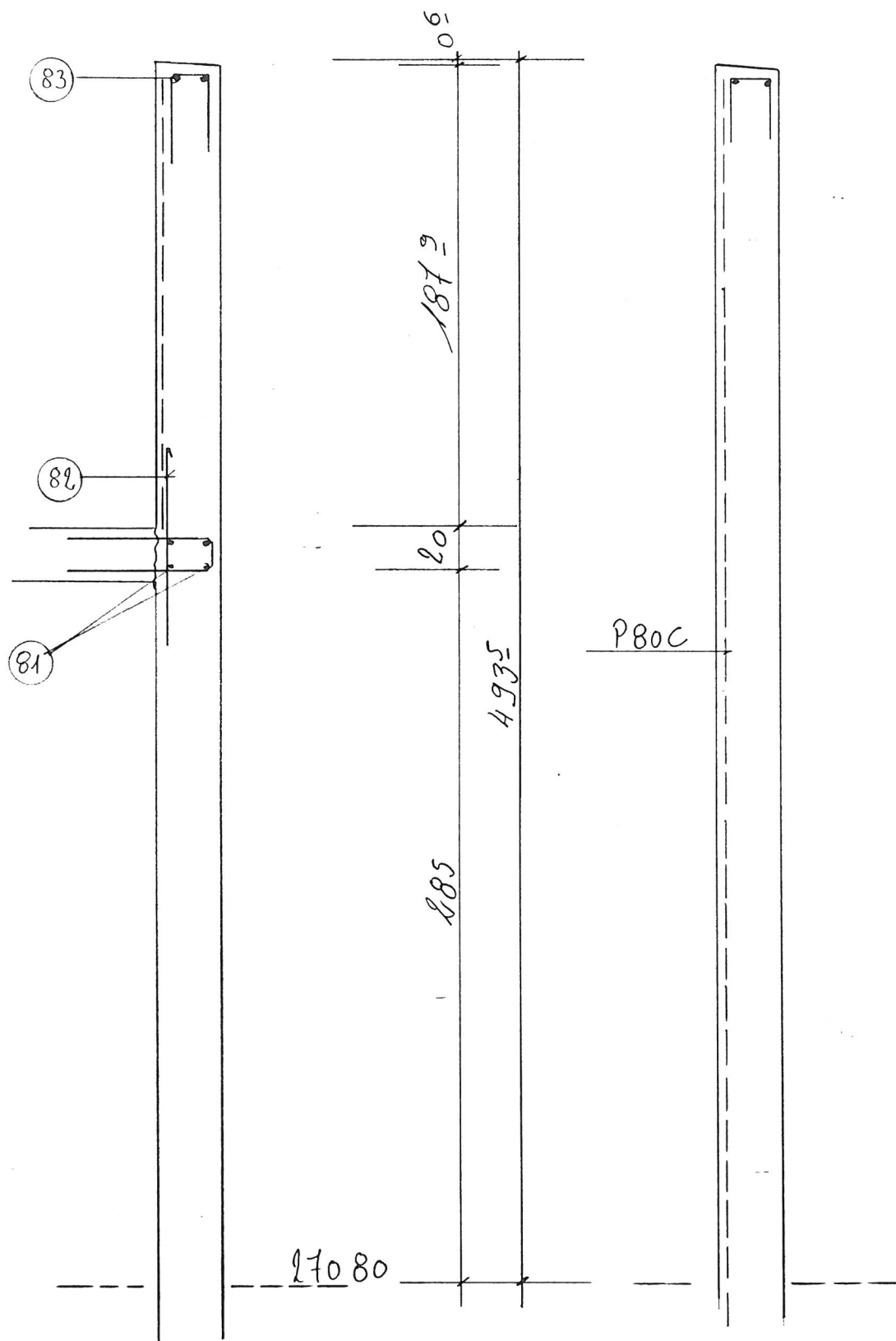
- F F -



- G. G. -

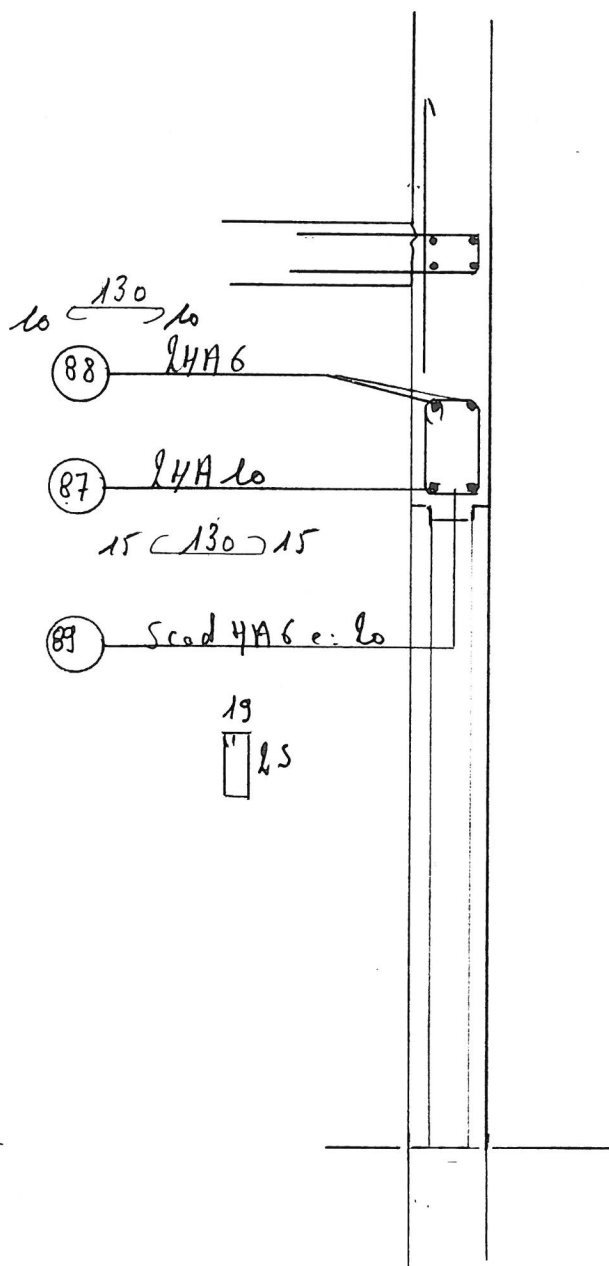
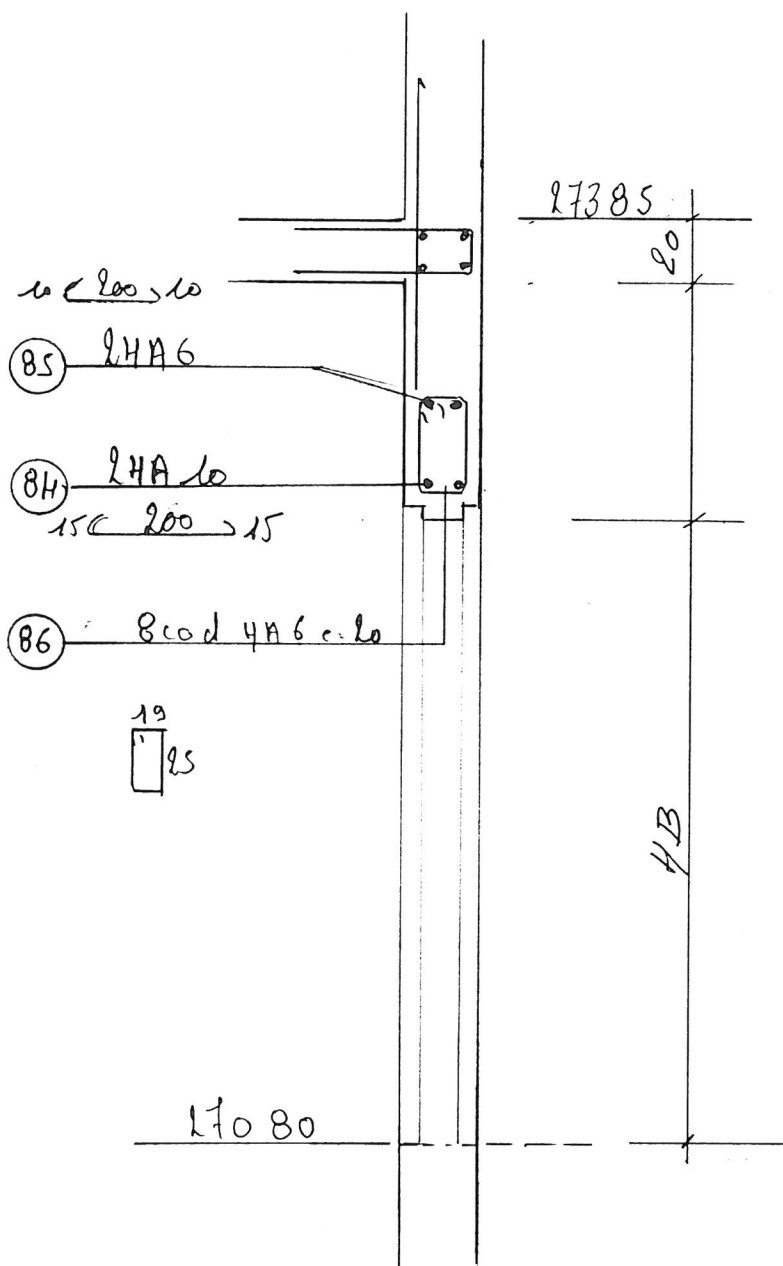
- H. H. -

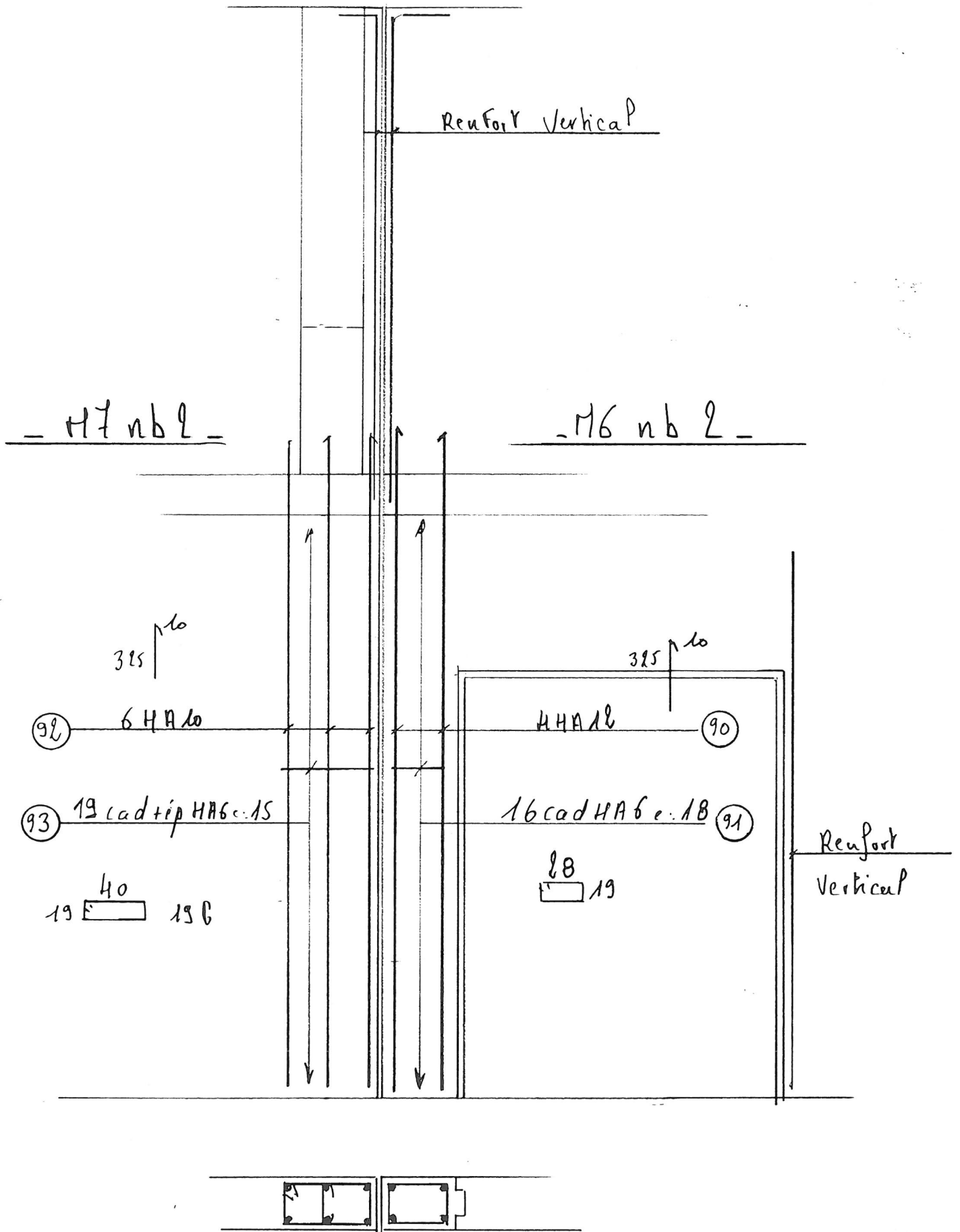
Ferrailage idem coupe FF



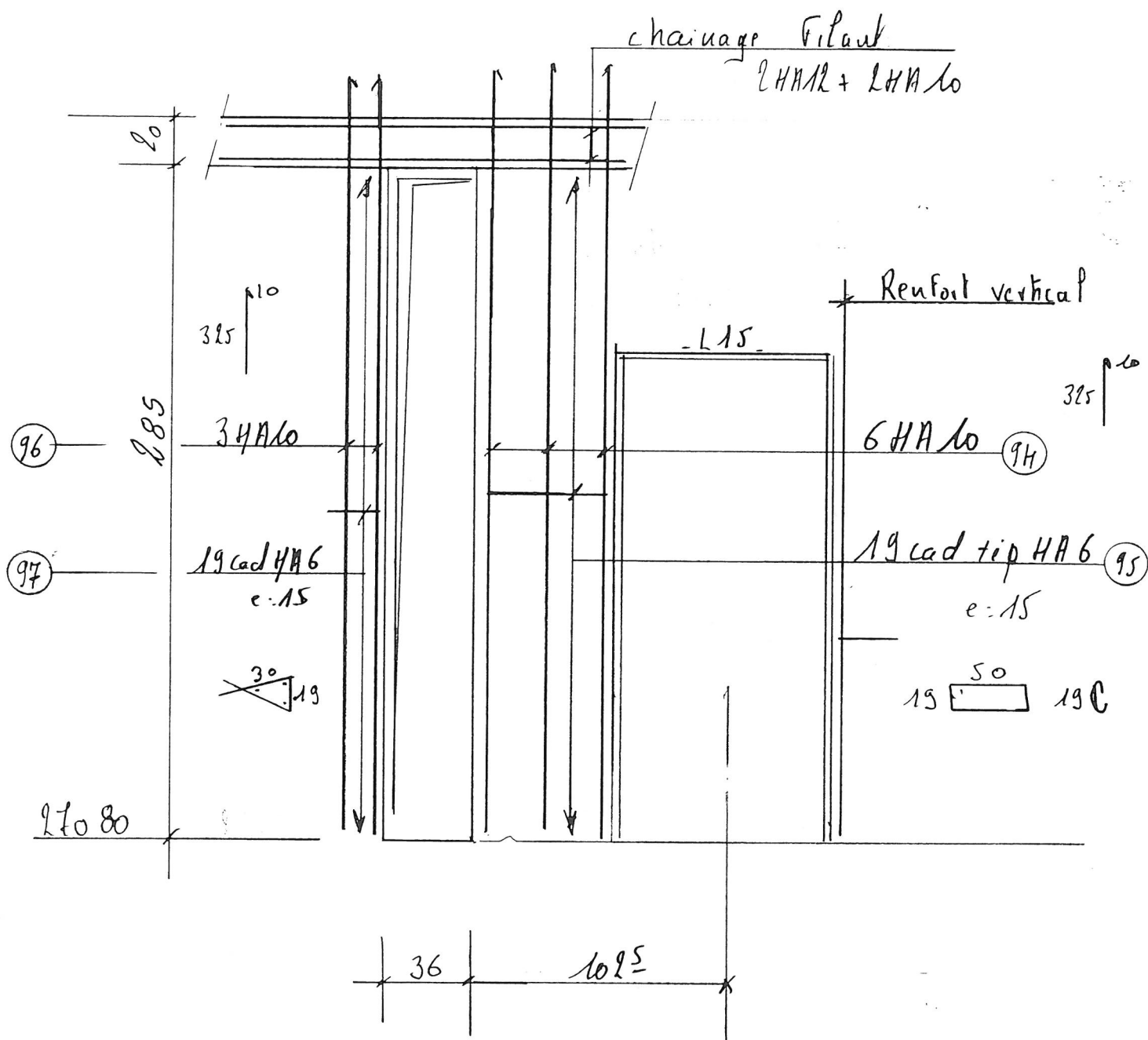
L14nb H

L15nb L

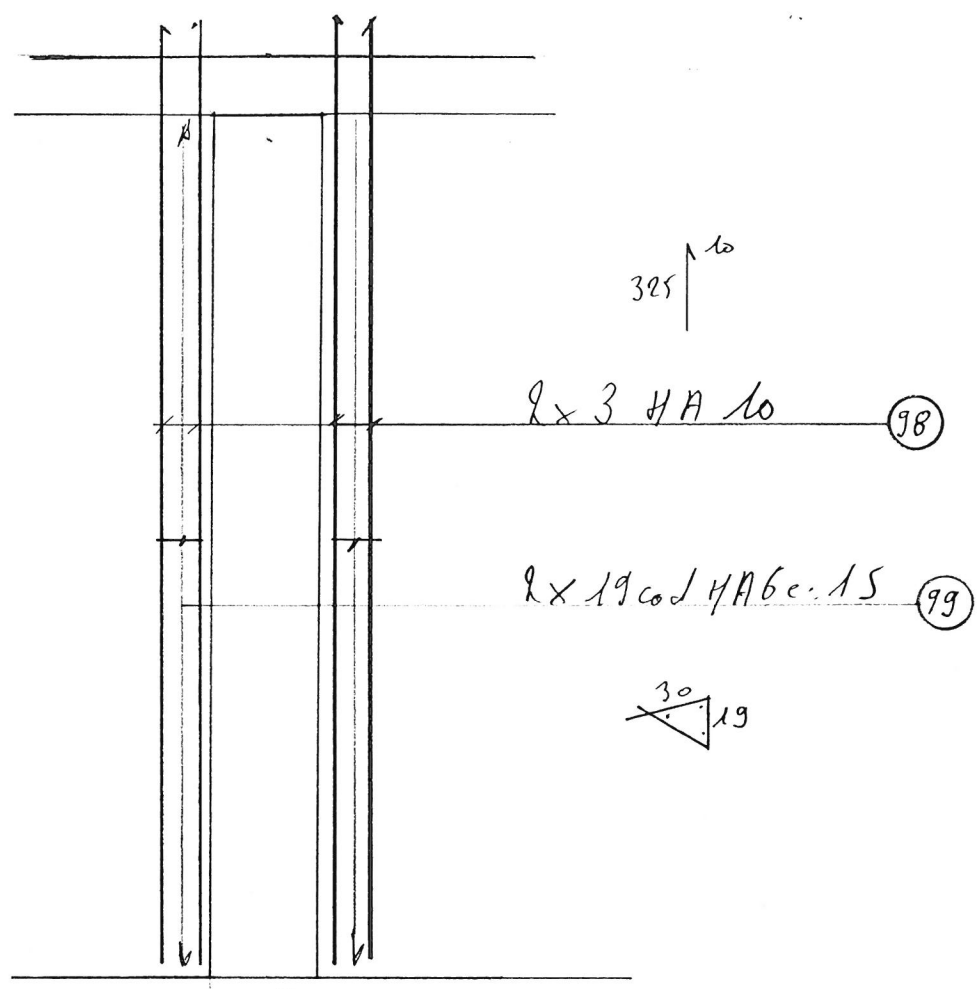




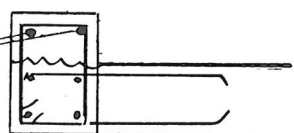
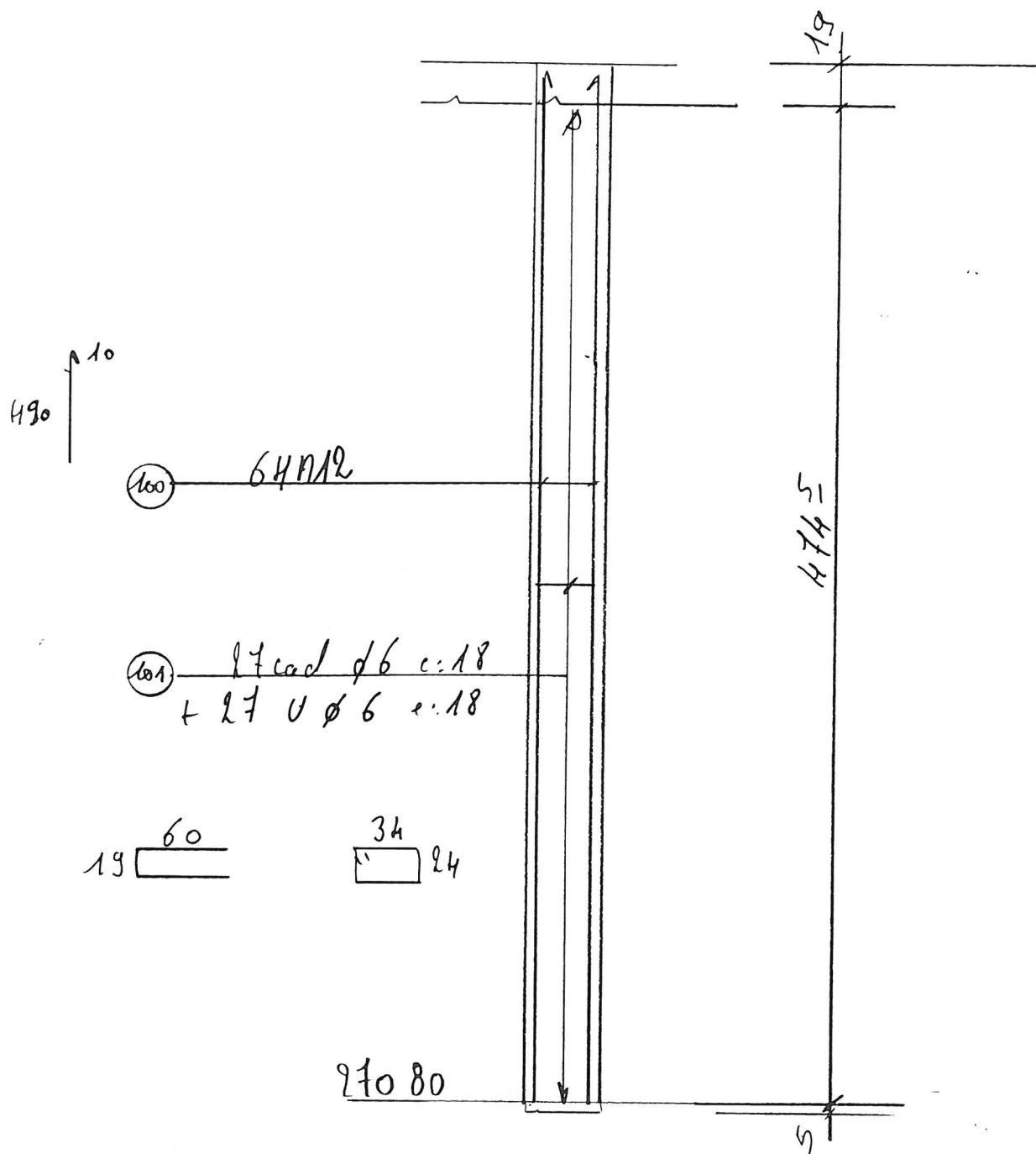
M9nb2 - M8nb2 -



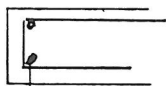
- M10 nb 2 -



- 11 nb 2 -



Renforts Verticaux des Huisseries et J D



2 HA 8 + 250 V HA 6 e: 80 (162)

2 x 80.00

19 $\frac{30}{}$

Renforts réservations 100 x 60 mm nb 4

(163)

